



CHALLENGE

60

WEST CHICAGO PUBLIC LIBRARY DISTRICT



3 6653 00091 2323

For Reference

Not to be taken from this room



CHALLENGE of 1960

WEST CHICAGO
ILLINOIS

EDITOR

SHARON NELSON

ASSISTANT EDITOR

JUDY AITKEN

BUSINESS MANAGER

BARBARA SMITH

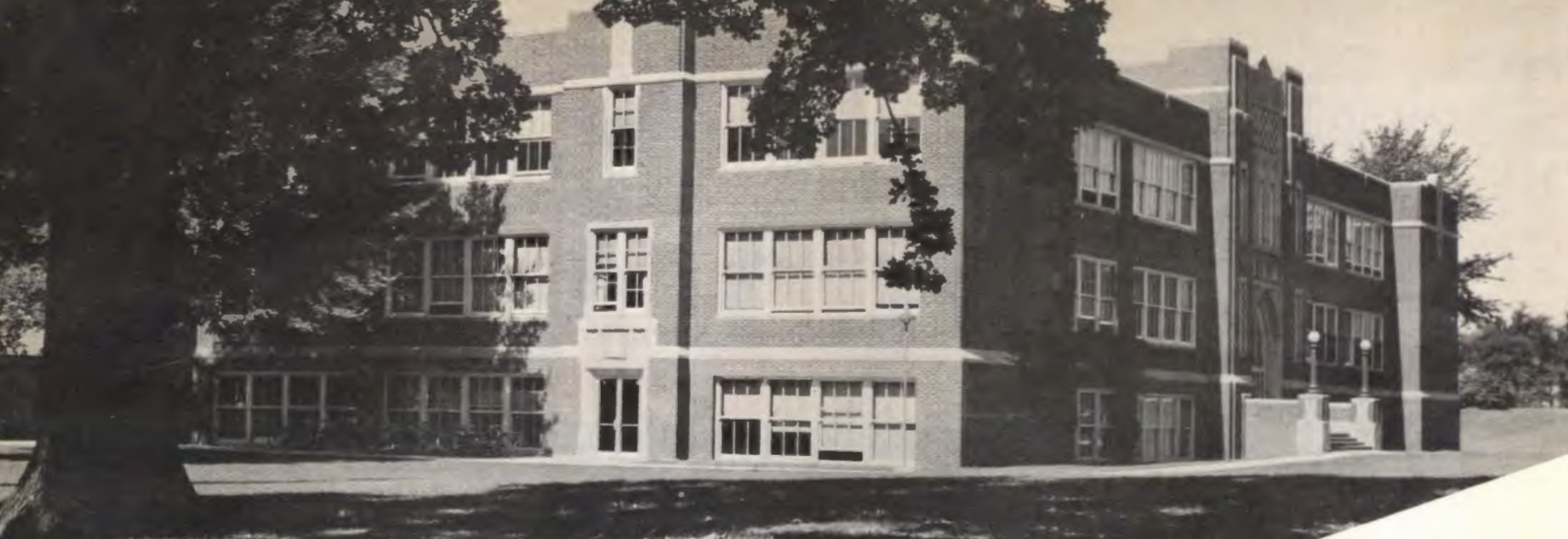


TABLE OF

Faculty 5

Seniors 13

Organizations 31

School colors:
Blue and white

SCHOOL

We're West Chicago, brave and bold;
We make up the fight, the line to hold.
We're West Chicago, don't you see?
We'll fight, fight, fight for victory.



CONTENTS

Activities 55

Sports 75

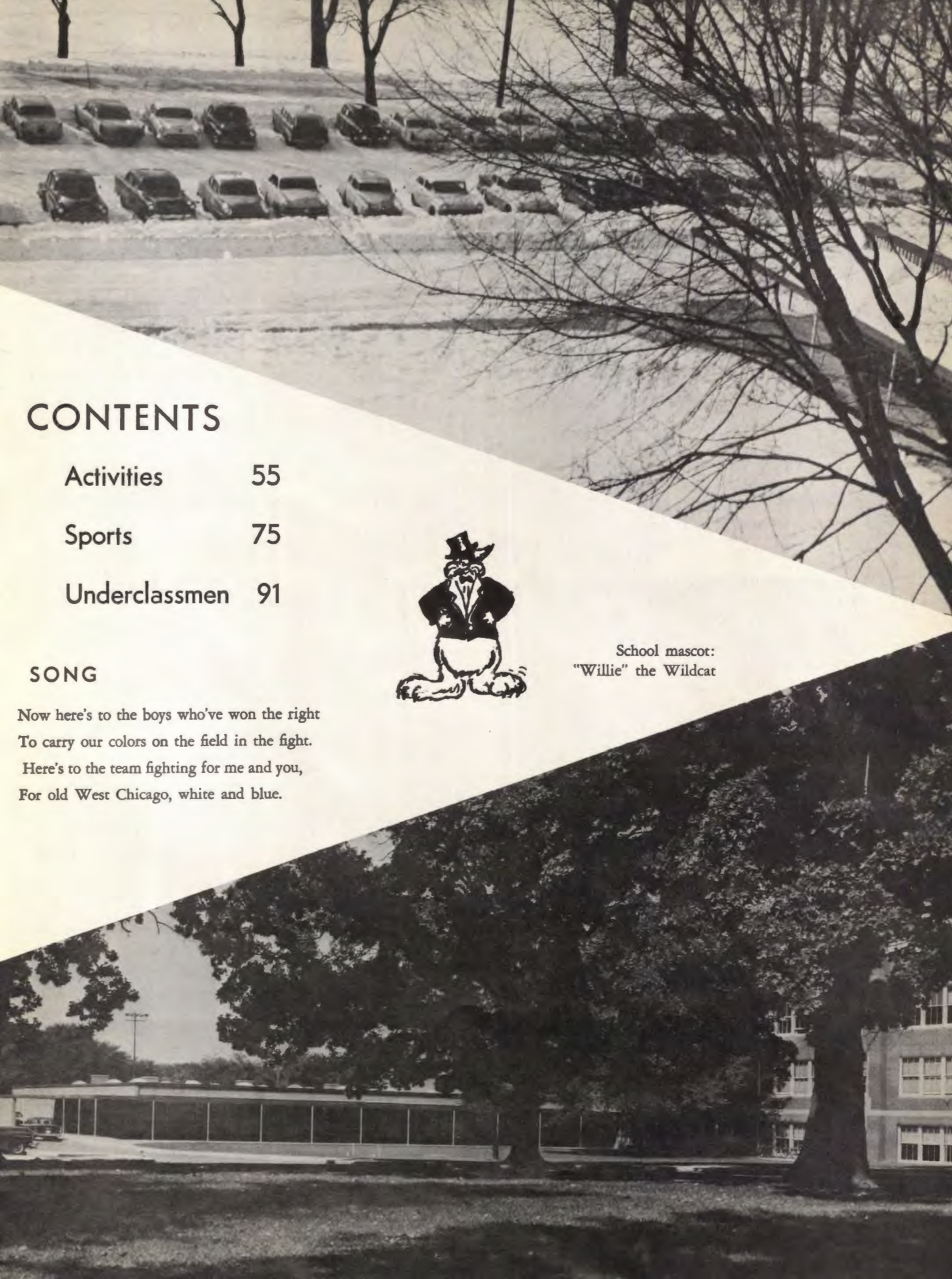
Underclassmen 91

SONG

Now here's to the boys who've won the right
To carry our colors on the field in the fight.
Here's to the team fighting for me and you,
For old West Chicago, white and blue.



School mascot:
"Willie" the Wildcat



WE'LL REMEMBER



The walk to school in fall, winter, and spring.



Eddie Schuett's buses that took us to and from school and to the games.



The spirited cheerleaders who led our yells.



The exciting games we attended.



Homecoming—assembly, parade, game, and dance.



Hall monitors who signed our passes.

Flunker's bench which wasn't always occupied by flunkers.

The cafeteria and its hard-working staff.





FACULTY

BOARD OF EDUCATION



MRS. HARRY L. HICKS



JOHN SCHWANTES



MRS. CATHERINE C. MADISON
Bookkeeper



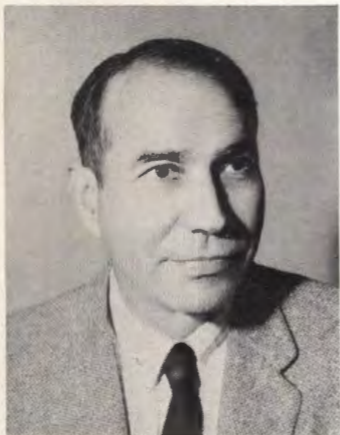
GEORGE W. CULLEY



RIDELL KELSEY
President



CLAUDE A. LEE
Secretary



RUPERT PRICE
ORDIE TIMM

JOHN M. MURPHY
Treasurer

GEORGE GLASSHAGEL



ADMINISTRATION



SAMUEL D. BISHOP
Principal



WINIFRED THOMASSEN
Bookkeeping, Principal's Office



CLIFFORD E. OWEN
Dean of Students

MARYANNE KOVARIK
Principal's Office



RALPH SCOTT
Visiting Teacher
for all grades.



MRS. ROBERTA ANDERSON
High School Nurse





MARIE W. BALZHISER
Mathematics I



GEORGE P. BARTHELL
Chemistry, Physical Science



DEAN L. BURGESS
English II and III



DONALD R. BYRKIT
Mathematics II and III



Mr. Murphy assists with the calculator.



PATRICIA CALIENDO
Physical Education

CHARLES A. COWDEN
Metal Shop



DAVID DEAN
Shop I, Mechanical
Drawing, Driver Training



GILBERT H. DeMAY
Social Studies, Physical Education





GRACE EDSON
Home Economics



MARIE FINK
Physical Education



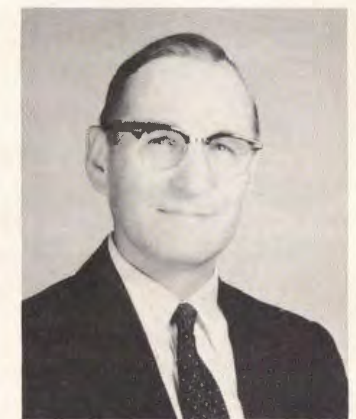
GARY D. FRANCIS
Physical Education,
Driver Training



Miss Lucado, sophomore advisor, assists with "Green Mist."



HOWARD B. HOLCOMBE
Social Studies, World History



HENRY B. HOWARD
Music

VERNON R. JAHNS
Driver Training



WILLIAM H. JOHNSON
English I and Speech



ROY KIISKILA
Typing, General Business
Shorthand I, Bookkeeping





HELEN M. KOUPAL
Library



FREDERICKA KRAUSS
Art



CLARENCE KYGER
Earth Science, Driver Training,
Physical Education



SHELDON LITTELL
Music

AFTERNOON STUDENT TEACHERS



Left to right: Loren Getz, Charles Patrick.



GLORIA LUCADO
General Business,
Typing I, II,
Shorthand II

ELIZABETH J. MAHONEY
American History



DON MORRISON
English I and III



JOHN C. MURPHY
Mathematics II and IV, Physics





JOSEPHINE MUZZO
Spanish I and II



DONALD NEMANICH
English II



ROGER C. O'NEIL
Biology, Coach



MORNING STUDENT TEACHERS

Left to right: Lillian Kons, Elsie Cool, and Charles Patrick.



ROBERT E. PRICE
Physical Education

RUSSELL SEVERE
English IV



JAMES D. SMITH
American Government



NORMA J. STAHL
Latin



THEY ALSO SERVE



CAFETERIA PERSONNEL

Mildred Maitland, Edna Johnson, Edna Root, Gloria Schwirian, Dorothy Rakow.

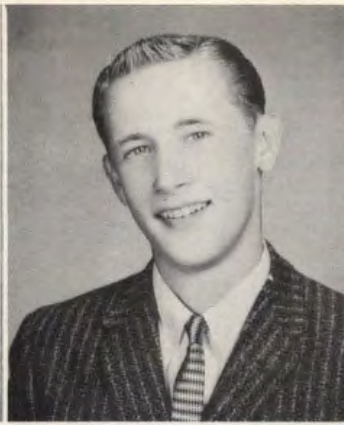
CUSTODIANS

Seated: Ernest Brow, Omer Tolley. Standing: Jim Rakow, Axel Swanson, Allen Mesmer.





JUDITH ANN AITKEN
Okay, Roger, and out!



WILLIAM ALEXANDER
Don't take life too seriously;
You'll never get out alive.

MURIEL RUTH ALLEN
Size is but a little word.



RONALD ALTERGOTT
Straight ahead ambition
Leads you day by day.

PATRICIA BADOWSKI
She burns the midnight oil,
But not always for study.



CYNTHIA JEAN BANCROFT
Fame, love, and fortune
On my footsteps wait.

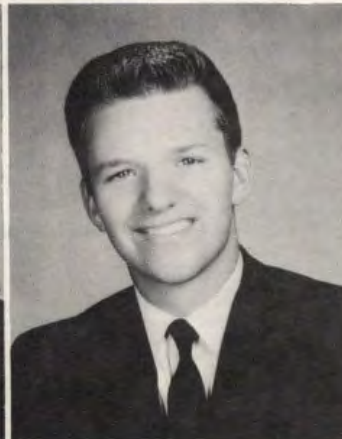
BONNIE BARTHA
Leave silence to the saints;
I'm only human.

DIANNE BAXTER

DONALD BAUMGARTNER
Never let studying interfere
With your education.

Give to the world the best
you have
And the best will come back
to you.

DAVID BARTUSH
The road is straight,
The way is wide—
A perfect dragstrip.





RICHARD KING BELL

I say, "I'm the noblest
Roman of them all."



WAYNE BERGSTROM

With a song in my heart and
Formaldehyde in my veins.



BONNIE KAY BITTER

Her name belies her sweet nature.

WILLIAM BRADY

There's a calm look in his eye,
But even looks can tell a lie.

KAREN SUE BROWN

This girl with her red hair,
Carries with her a friendly air.

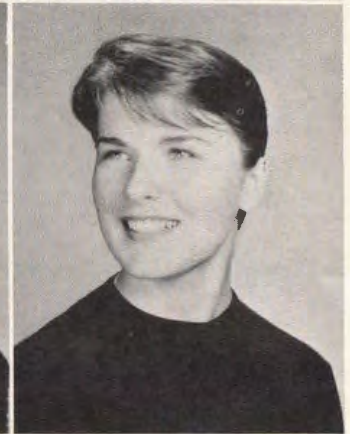


NANCY LEE BROWN

Can we ever have too much
Of a good thing?

ANNE CARNEY

Life is a mirror—smile at it,
And it will smile at you.



STEPHANIE CONTINO

Boys are bothersome,
But I like to be bothered.

SHANE JOHN CONWAY

Love is an ocean of emotions,
Entirely surrounded by expenses.



ANN CRATERFIELD

Happiness is a habit
Cultivated in her heart.



MARGARET CRAWFORD

Silence makes no blunder.

RICHARD DALEIDEN

It takes a brave man
To swim with the "Sharks."

DONALD DIERKING

In math 'tis said
He's hard to compare;
But his personality
Proves that he's no square.



LESLIE DAVIS

Tall of build,
Quick of wit;
To all he meets,
He's quite a hit.

JUDY DONAHUE

A girl possessed with "Curtis-E."



MARY LOUISE DODGE

To me every day is sunny,
So why not try to match it.

WILLIAM DOYLE

The best kind of friend;
And a real sport,
He's active on the basketball
court.



CHARLENE FAIRBANKS

A happy life consists
In tranquillity of mind.

CAROLYN FAIRBANK

A smile that wins,
A manner that takes;
Everywhere she goes,
Friends she makes.

JUDITH ALICE DUNNETT

Every book burned
Enlightens her world.



BEVERLY FREICK

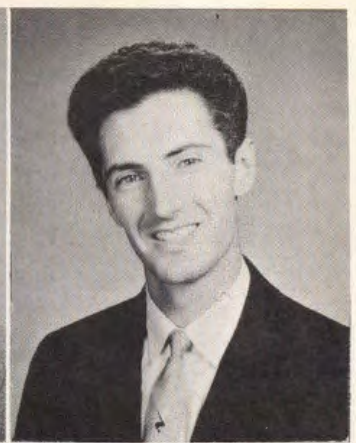
Personality is to a girl
What perfume is to a flower.

DAVID FRYE

Size does not determine effort.

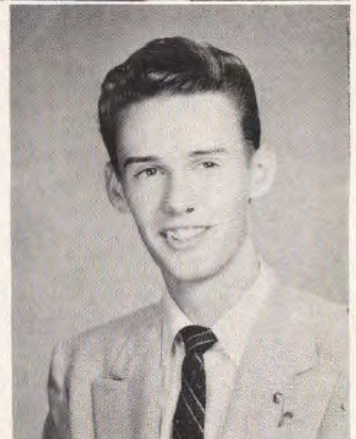
ANTAL GABOR

Honor lies in Honest toil.



ANDREW GARBACZ

The two studies he likes the
best of all;
The heart of a girl and
basketball.



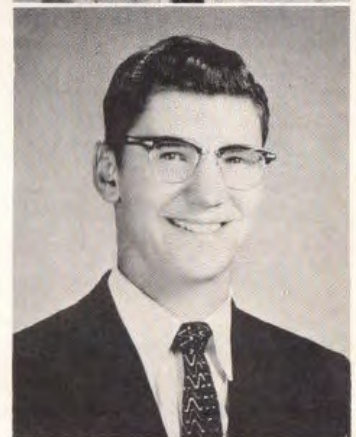
MARY FARLEY

Beauty is a song.



RICHARD GIESE

All wonder about him,
Since actions don't reveal all.



LORENTZ FELTES

Beneath that quiet soft-spoken
exterior
Lies a fine sense of humor.



RITA FORKIN

A definition of flirtation:
"Attention without Intention."

ROBERT FOWLER

Give him his track shoes and
a girl;
Then watch him go.

MAUREEN FRANKLIN

She does little kindnesses
Which most leave undone.





LOIS ANN GRUBNER

She may be small,
But she has a big heart.

MADELINE GILLGASCH

Her definition of success is:
"Friends."

ELEANOR HADFIELD

Sincerity is one of her nicest
assets.

BARBARA ANN GOULD

A nice girl to have around.

MALCOLM GRIERSON

You can't tell by the honk
Of his horn, how much
Gas is in his tank.

KAREN HAGEN

Ambition never sits still.

JOHN GROUSTRA

That's the way the mop flops.

RICHARD HAGEN

Don't cross your bridges
If you can beat the toll
By going around.

KAREN HALFPENNY

A volcano in a constant
State of eruption.

ROBERT HANSEN

"There's nothing like fun,
Is there?"

GEORGIA HARBELIS

Honestly! I can't concentrate
During the day.

MARSHA HAWKINS

No man can calculate
On what this girl will say or do.





ROBERT HELLICKSON

Not only good,
But good for something.

SUSAN HOFFMAN

She is soft-spoken,
Smiles and sweet words are
her token.



MARION KAY HENSEL

Reasons, reasons! Why does
Everyone want to know the
reasons?
I just want the results.

DONALD HOPKINS

There'll be a hot time
In the old town tonight.



NANCY HESS

Life is fun if you make it so.

EDWIN JOHNSON

Classics or pops,
His music is tops.



LANCE ALLEN HITTMAN

His eyes spell mischief,
His smile says "Hi",
We all like him,
He's one swell guy.

LAWRENCE JOHNSON

Men of few words
Are the best men.



SHARON KARWOSKI

Dynamite comes in small
packages.



BONNI F. KIMMEL

Wildlife hasn't disappeared—
It's moved into my house.



RICHARD KING

Keep on smiling
And people will wonder
What you're up to.



JANET ANNE KLEIN

Beautiful eyes are those that
show,
Beautiful thoughts that burn
below.





RONALD KLINGBERG

Does his tinkering make
His car go?

MARIE KNUTSSON

Her smile can change a
Gloomy day to a cheery one.

ROBERT KNUTSSON

He fiddled
While Mr. Howard burned.



THOMAS KOPACZ

One cannot know everything.

KAREN RAY KRUSE

Life is just a jig saw puzzle
With most of the pieces missing.

SUE LAWRENCE

The sweetest, and in
Fairest colors dressed.



RICHARD LENERTZ

A fellow whom everyone admires
For his good nature and games.

BARRY LUCHT

He's a quiet man,
But quite a man.

JILL ANN MACKENZIE

I'll agree with you,
If you're on the winning side.



SHARON MAGEE

A friend indeed.

GARY MANTZ

A girl for every curl.

FRANCIS MAY

A girl of few words
And boundless energy.

ROGER MENDRISKI

The man worth while
Is the one who will smile
When every thing goes wrong.

LOIS A. MESSER

Make all you can,
Save all you can,
Give all you can

THOMAS MIKOS

Horse-power was safer
When only horses had it.

PETER MODAFF

Give me a car, money, and a girl
And I'll be happy.

JUANITA MONTANA

Smiling and friendly
Towards all.

WILLIAM MORRISON

I know what's good for me.



GEORGE MOSIER

Early to bed,
Early to rise,
And you miss the best part of
the day.

HELEN MUELLER

Always gay and happy-go lucky.

MARY RAMAH NAGEL

True friendship is worth
More than gold.

SHARON NELSON

She works her way into your
heart.

BONNIE NEUBAUER

Politeness goes far,
But costs nothing.

MARY O'KANE

A new girl who got acquainted
fast.





CHARLENE OSGOOD

The look in her eyes betrays her thoughts.



JAMES OWENS

Why work,
What are others here for?



JUDY PARTEE

Five-foot two, and eyes of blue;
My O My, what she can do!



VIRGINIA PERKINS

There are other men
Than those in school.



MARTINE OLSEN

Natural curls are the envy
Of all girls.

EVELYN PETERS

A charming girl in every way,
She helps to brighten every day.



"Those horrid exams!" exclaims Doris Speck.
Meanwhile Karen Brown and Nancy Brown
seem to think that eating in the halls is fun.



STANLEY PETERSON

"Don't tempt me."



CHARLOTTE RASMUSSEN

It's not that I like girls less,
But I like boys more.





BONNIE RATEIK

Nothing interests me,
Unless it's none of my business.



MARY SUE RAYMOND

Her radiant smile could light
Up even the darkest corner.



THOMAS REED

As he plays the keys of success,
He composes a symphony of
friendliness.



Richard Daleiden points out to Richard Sindler and Mr. Johnson another burned out light bulb.

BEVERLY SCHLICK

She's a "Schlick chick."



FREDRICH REUER

I like food, sports, and girls—
But not in that order.



JOAN ROLLAND

"Life is just a dare."



TIMOTHY ROOT

Born with a gift of laughter,
And a sense that the world was
mad.



THOMAS RUNOWSKI

Worry and I have never met.



BONNIE JEAN SCHRAMER

We all know her favorite subject
is "gym."

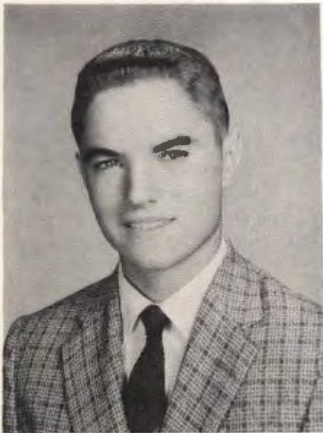


SYLVIA SCHRAMER

Full of life and lively fun,
A friend and pal to everyone.

WARREN SCHRAMER

Who said a girl
Is afraid of a mouse?



WAYNE SCHRAMER

It takes a fool to stay up all
night,
But a farmer to get up early.

CAROLYN SCHROEDER

Starched uniforms,
Clinking instruments,
Quiet patience.



KEITH SCHULTZ

I may not always be right—
But I'm never wrong.

LORETTA SEELEY

A girl who believes in Life,
Liberty, and the happiness of
pursuit.

CHARLENE SIEVERT

The world was made to be
Enjoyed, and I'm going to
Make the most of it.

RICHARD M. SINDLER

Don't misunderstand me,
"Heckle, Heckle, Heckle."

DANIEL SHARP

Looks Sharp,
Feels Sharp,
Is Sharp.





BARBARA SMITH

And still they gazed,
And still their wonder grew,
That one small head
Could carry all she knew.



BETTE SMITH

Quiet and Petite,
She really is sweet.



WILLIAM SMITH

In Memoriam

RAYMOND SNYDER

What would the world be
Without one good follower.

DORIS JEAN SPECK

A girl of few words,
A few more than Webster.



GLENN SPONHOLTZ

A bashful guy and rather tall,
But everyone knows he's on the
ball.

BARRY STARK

Off he'll go into the
"Wild Blue Yonder."



DICK STEEL

Steel's Theory: If eight hours of
sleep are good, twice as much
must be better.

JUDY MARIE STEFANIE

Sweet as the flowers
She works among.



FRED TAYLOR

Taylor-made for girls.



SUSAN THALMAN

Blushing is the color of virtue.



EDWARD THIELEN

I'll agree with you,
If you'll agree with me.



GARY THIELK

I was gratified to answer
promptly. I said I didn't know.



JAMES THOMPSON

He'd change the National Honor
Society to the Jewel Honor Society.

KATHLEEN THOMPSON

With pep and steam,
She cheers for the team.

KAY VANTRESSE

A quiet miss with a pleasing
way.

PAT VANWALLINGHAM

I hate men;
Well, it sounds good anyway.

MARY VENECEK

A girl with a sunny personality,
And a dimpled smile.



JOHN WALKER

Discussion through Percussion.

JUDITH ANN WELTMAN

I'm going to Live, Live, Live,
Until I die.

CONNIE WIESBROCK

New students always brighten
A class.

RAYMOND WOOD

The power of thought—
The magic of the mind.

NANCY LEE WOOLCOTT

Her future is planned
Third finger, left hand.

SHIRLEY WURTZ

She's a perfect lady, Sugar
and spice and everything nice.

MARGO YINGST

The sunshine of her heart;
Is reflected with her smile.

ELODIA ZAMORA

Full of high spirits,
She's a girl worth knowing.



SENIOR

RECORDS

JUDITH ANN AITKEN:

Class secretary 2,3,4; Spanish Club 3; F.T.A. 1,2,3-Treasurer 3; Challenge Staff 2,3,4-Assistant Editor-in-Chief 4; Student Council alternate 1,2; Pep Club 1,2; Junior Play Publicity-assistant director; Senior Play Publicity; Honor Roll 6 semesters; Band 1,2,3,4; Orchestra 2,3; Operetta Orchestra 2,3; We-Go Ego 3,4; National Honor Society 3,4; Girl's State alternate 3.

WILLIAM ALEXANDER:

Class Vice-president 4; Chess Club 3; Challenge Staff 4; We-Go Math Club 4; Student Council 2; Pep Club 4; Junior Play cast and Publicity; Senior Play cast; Basketball 1,2,3; Track 3,4; Baseball 2; Honor Roll 4 semesters; Boy's State 3.

MURIEL RUTH ALLEN:

G.A.A. 1,2; Art Club 4-secretary and treasurer 4; Pep Club 1,2,3,4; Junior play scenery; Senior play stage crew.

RONALD ALTERGOTT:

Band 1,2,3; Orchestra 1,2,3; Operetta Orchestra 3.

PATRICIA BADOWSKI:

Spanish Club 2; G.A.A. 1,2,3; Challenge Staff 2; Student Council 1; Pep Club 1,2,3,4; Cheerleader 2; Honor Roll 2 semesters; Queen's Court; Hall Monitor 3.

CYNTHIA JEAN BANCROFT:

Spanish Club 1,2-President 2; G.A.A. 1,2,3,4-Secretary 3, President 4; Cheerleader substitute 4; Honor Roll 6 semesters; High Honor Roll 13 six weeks periods; Queen's Court; Hall Monitor 3,4; Band 1; G.A.A. Camp; National Honor Society 3,4-Secretary-Treasurer 4.

BONNIE BARTHA:

F.T.A. 1,2; We-Go Staff 2,3; Pep Club 3; Orchestra 1,2,3,4; Music Camp 2; Glee Club 1,2,3,4.

DAVID BARTUSH:

Chess Club 3; Wrestling Manager 1,2; Hall Monitor 4.

DONALD ROBERT BAUMGARTNER:

Math Club 4; Executive Council 4; Pep Club 3,4; Football 1,2,3,4-Co-Captain 4; Basketball 1,2,3,4; Baseball 1,2,3; Hall Monitor 3,4; Band 1; Basketball Camp 4.

SHARON DIANNE BAXTER:

F.T.A. 2; We-Go Staff 3; Pep Club 3,4; Junior Play Scenery 3; Honor Roll 2 semesters; Glee Club 2,4; Transferred from East Aurora, Illinois 2.

RICHARD KING BELL:

Chess Club 3; Varsity Club 3,4; Challenge Staff 4; We-Go Math Club 4-President 4; Pep Club 2,4; Junior Play Cast; Senior Play Cast; Football 2,3,4; Track 1,2,3,4; Wrestling 1,2,3,4-Captain 3; Honor Roll 4 semesters; Boy's State 3; Vice-President of Class 3; National Honor Society 3,4-President 4.

WAYNE BERGSTROM:

Pep Club 3,4; Senior Play Cast; Wrestling 3; Music Camp 2; Operetta 2,3; Glee Club 1,2,3,4-President 4.

BONNIE KAY BITTER:

G.A.A. 1,2,3,4; Challenge Staff 2; Hall Monitor 4.

WILLIAM BRADY:

Hall Monitor 3; Band 1,2; Orchestra 1; Operetta stage hand.

KAREN SUE BROWN:

G.A.A. 1,2,3; Pep Club 2; Hall Monitor 4.

NANCY LEE BROWN:

F.T.A. 2,3-Vice-President 3; Glee Club 1,2,3,4-Secretary 4; Operetta Cast 3,4 and Scenery.

ANNE ELIZABETH CARNEY:

G.A.A. 1,2; Challenge Staff 1,2; Pep Club 1,4.

STEPHANIE CONTINO:

Student Council 3,4; Pep Club 3,4; Junior Play Make-up; Senior Play Cast; Honor Roll 6 semesters; Glee Club 1.

SHANE JOHN CONWAY:

Pep Club 2,3,4-Pep Board 4; Football 1,2,3,4; Basketball 1,2; Track 1,3; Hall Monitor 3,4.

ANN CRATERFIELD:

Challenge Staff 2; Pep Club 3,4; Junior Play stage crew; Glee Club 1.

MARGARET CRAWFORD:

Transferred from St. Francis 3.

RICHARD DALEIDEN:

Senior Play properties committee; Wrestling 3; Transferred from Notre Dame, Indiana, 3.

LESLIE DAVIS

Pep Club 4; Junior Play Cast 3; Basketball 1,2,4; Honor Roll 4 semesters.

DONALD DIERKING:

Senior Play properties committee; Basketball 2; Honor Roll 1 semester.

MARY LOUISE DODGE:

Glee Club 1,2,3,4; Operetta 2,3.

JUDY DONAHUE:

G.A.A. 1,2,3,4-Board 1,2,3-Vice-President 4; F.T.A. 3; Student Council 1-Alternate 2,4; Pep Club 1,3; Junior Play Costumes; Senior Play Publicity; Honor Roll 6 semesters; Band 1,2,3,4; Orchestra 1; G.A.A. Camp 3; Sophomore Class Treasurer; National Honor Society 3,4.

WILLIAM DOYLE:

Varsity Club 4; Basketball 3,4-Co-Captain 4; Track 3,4; Basketball Camp 4; Transferred from West Aurora, Illinois, 3.

JUDITH ALICE DUNNETT:

Orchestra 1,2,3; Glee Club 4; Operetta Orchestra 3.

Eddie Johnson typifies the many seniors whose services are never mentioned in the senior records.



SENIOR



Rita Forkin, Muriel Allen, Lance Hittman, Charlene Osgood, Diane Baxter, George Mosier, Roger Mendriski, Marsha Hawkins, and Miss Krauss helped make the Junior Play a success.

CAROLYN FAIRBANK:

G.A.A. 1,2,3,4-Treasurer 2; Class Treasurer 3,4; Cheerleader 2,3,4; Junior Play Cast; Honor Roll 4 semesters; Homecoming Queen; Band 1,2,3; Girl's State 3; Cheerleading Camp 3; National Honor Society 3,4-Vice-President 4; Pep Club 1,2,3,4-President 3,4.

CHARLENE CAROL FAIRBANKS:

Hall Monitor 3.

MARY FARLEY:

Executive Council 4; Pep Club 3,4; Pep Club Board 4; Junior Play Make-up; Queen's Court; Music Camp 3; Glee Club 1,2,3,4; Operetta Cast 2,3; National Honor Society 3,4.

LORENTZ FELTES:

Transferred from St. Francis 3.

RITA FORKIN:

G.A.A. 1,2; Challenge Staff 2,3; Pep Club 1,2,3,4; Junior Play Scenery; Hall Monitor 3.

ROBERT FOWLER:

Challenge Staff 2,3,4; We-Go Math Club 4; Pep Club 3,4; Football 1,2,3,4; Track 1,2,3; Wrestling 3,4; Honor Roll 2 semesters; Hall Monitor 3; Band 1,2; Varsity Club 4.

MAUREEN FRANKLIN:

Spanish Club 1,2; F.T.A. 1,2,3,4-Secretary 2, President 4; Junior Play Scenery; Honor Roll 3 semesters; Orchestra 2,3,4; Band 1,2,3,4; Glee Club 2; We-Go Ego 3.

BEVERLY FREICK:

Spanish Club 1,2; Class Secretary 1; Challenge Staff 2,3; Student Council alternate 4; Pep Club 1,2,3,4; G.A.A. 1,2,3,4; G.A.A. Board 4; Substitute Cheerleader 2; Honor Roll 6 semesters; High Honor Roll 1 six weeks; Queen's Court; Hall Monitor 4.

DAVID FRYE:

Glee Club 1.

ANTAL GABOR

Chess Club 4; Orchestra 4; Transferred from Hungary 4.

ANDREW GARBACZ:

Varsity Club 2,3,4-President 4; Pep Club 3,4; Junior Play stage hand; Basketball 2,3,4; Baseball 1,2,3; Honor Roll 5 semesters; Basketball Camp 4.

RICHARD GIESE:

Varsity Club 3,4; Football 1,2,3,4; Band 1,2,3,4; Orchestra 1,2,3,4; All State Band 4.

MADELINE GILLGASCH:

G.A.A. 2; Challenge Staff 2; We-Go Staff 4; Pep Club 2,3,4; Honor Roll 3 semesters; Hall Monitor 4; Glee Club 1.

MALCOLM GRIERSON:

Junior Play technician; Senior play properties committee; Football Manager 2; Hall Monitor 3,4.

JOHN GROUSTRA:

Student Council 2,3,4-Treasurer 3, President 4; Junior Play Cast; Senior Play Cast; Band 1,2,3,4; Operetta 3,4; National Honor Society 3,4.

LOIS ANN GRUBNER:

G.A.A. 2; F.T.A. 2; We-Go Staff 3; Pep Club 1; Junior Play publicity; Senior Play publicity; Honor Roll 4 semesters; Band 1,2,3,4; Orchestra 1,2,3,4; Class Vice-President 1,2; We-Go Ego 3,4; Operetta Orchestra 3; All State Orchestra 4.

ELEANOR HADFIELD:

G.A.A. 3,4; We-Go Math Club 4; Student Council alternate 3; Pep Club 3,4; Junior Play publicity; Senior Play publicity; Honor Roll 4 semesters; Hall Monitor 4; Transferred from Glenbard 2.

KAREN HAGEN:

G.A.A. 1,2,3,4; Challenge Staff 4; We-Go Math Club 3,4; Honor Roll 5 semesters.

RICHARD HAGEN:

Baseball 1; Band 1,2,3,4; Orchestra 4.

KAREN MARIE HALFPENNY:

Spanish Club 3; Pep Club 4; Senior Play Cast; Operetta Cast 3.

ROBERT HANSEN:

Junior Play Cast; Tennis 2; Hall Monitor 3,4; Glee Club 1.

GEORGIA HARBELIS:

G.A.A. 1; Challenge Staff 3; Art Club 4; Glee Club 1.

MARSHA LOU HAWKINS:

Challenge Staff 3; Pep Club 3,4; Senior Play Cast; Transferred from Baltimore, Maryland 3.

MARION KAY HENSEL:

Spanish Club 1,2-Vice-President 2; Senior Play publicity; Honor Roll 6 semesters; Band 1,2,3,4; Orchestra 1,2,3,4-Vice-President 4; Operetta Orchestra 2,3; We-Go Ego 3,4; All State Orchestra 4.

NANCY HESS:

G.A.A. 1,2,3,4; Hall Monitor 3.

LANCE ALLEN HITTMAN:

Spanish Club 1; Chess Club 3,4; Challenge Staff 3; Pep Club 3; Junior Play properties; Football 1,2; Baseball 1,2; Wrestling 1.

SUSAN HOFFMAN:

F.T.A. 3,4; Pep Club 3,4; Transferred from Wheaton Academy 3.

DONALD HOPKINS:

Wrestling 3,4; Hall Monitor 3,4.

EDWIN JOHNSON:

Student Council 2,3,4; Junior and Senior Play organist; Honor Roll 6 semesters; Band 1,2,3; Orchestra 1,2,3,4-President 3,4; We-Go Ego 3,4-President 3,4; Operetta Cast 3,4; National Honor Society 3,4.

LAWRENCE JOHNSON:

Varsity Club 4; Football 1,2,3,4; Basketball 1,2,3; Baseball 1,3; Hall Monitor 3.

SHARON KARWOSKI:

F.A.A. 1,2,3,4; Art Club 2; Class Treasurer 1; Pep Club 1,2,3,4; Cheerleader 2, Substitute 3.

BONNI F. KIMMEL:

Spanish Club 2; G.A.A. 1,2,3; Challenge Staff 1,2; Student Council Alternate 2; Executive Council 4; Pep Club and Board 2,3,4; Junior Play Cast; Senior Play Cast; Honor Roll 4 semesters; Hall Monitor 4; Glee Club 1.

RECORDS

RICHARD KING:

Art Club 4; Senior Play publicity-properties and stage crew; Basketball Manager 1; Football 1; Tennis 1; Audio-Visual 1,2,3,4.

JANET ANNE KLEIN:

G.A.A. 2,3,4; Challenge Staff 3; Student Council alternate 3,4; Pep Club 3,4; G.A.A. Board 4; Junior Play Cast; Honor Roll 6 semesters; Glee Club 2; Operetta Cast 2.

RONALD KLINGBERG:

Baseball 1,2,3,4.

MARIE KNUTSSON:

Band 1,2,3,4; Orchestra 1,2,3,4; Operetta Orchestra 3.

ROBERT KNUTSSON:

Band 1,2,3,4; Orchestra 1,2,3,4; Operetta Cast 3.

THOMAS KOPACZ:

Wrestling 4; Band 1,2,3,4; Orchestra 4.

KAREN RAY KRUSE:

Spanish Club 1; F.T.A. 2; We-Go Staff 1,2,3,4; Pep Club 1,2,3,4; Junior Play assistant director; Honor Roll 5 semesters.

SUE LAWRENCE:

G.A.A. 1,2; Challenge Staff 2; Pep Club 2,4; Glee Club 1.

RICHARD LENERTZ:

Varsity Club 3,4-Secretary-Treasurer 4; Football 1,2,3,4; Basketball 1,2,3,4; Track 2; Baseball 1,3; Honor Roll 1 semester.

BARRY LUCHT:

Spanish Club 2; Chess Club 3; We-Go Math Club 4; Pep Club 3,4; Junior Play Cast; Senior Play Cast.

JILL ANN MACKENZIE:

F.N.A. 4-President 4; Challenge Staff 4; Senior Play properties committee; Glee Club 1,2; Operetta 2.

SHARON MAGEE:

F.T.A. 1,2-Treasurer 2; F.N.A. 4; Pep Club 4; Junior Play scenery; Senior Play scenery.

GARY MANTZ:

Senior Play Cast; Football 1,2,3; Track 2; Hall Monitor 3,4; Band 1.

FRANCIS MAY:

G.A.A. 2,3,4; Pep Club 2,3,4; Honor Roll 1 semester.

ROGER MENDRISKI:

Chess Club 3,4; Art Club 4; Executive Council 4; Junior Play stagehand.

LOIS A. MESSER:

G.A.A. Board 1,2,3,4; Pep Club 1,2,3,4; Student Council Alternate 3; Junior Play publicity; Senior Play publicity; Band 1,2,3,4; Orchestra 1,2,3,4; Operetta 2,3; We-Go Ego 3,4; Honor Roll 3 semesters.

THOMAS MIKOS:

Chess Club 4; Transferred from Argo, Illinois 1.

PETER MODAFF:

Pep Club 1,2,3,4; Football 1,2; Hall Monitor 4; Band 1; Operetta 2,3.

JUANITA MONTANA:

Pep Club 4; Hall Monitor 3.

WILLIAM MORRISON:

Chess Club 3,4; Glee Club 2.

GEORGE MOSIER:

Chess Club 3; Junior Play stagehand; Senior Play stagehand; Football 1,2; Art Club 4.

HELEN MUELLER:

G.A.A. 1,2; Pep Club 4; Glee Club 1,2,3,4; Operetta Chorus 2,3.

MARY RAMAH NAGEL:

G.A.A. 1,2; Pep Club 3,4; Junior Play Cast; Senior Play Cast; Honor Roll 4 semesters; High Honor Roll 1 six weeks; National Honor Society 3,4.

SHARON NELSON:

G.A.A. 4; Challenge Staff Editor-in-Chief; Student Council Alternate 2; Pep Club 3,4; Senior Play publicity; Honor Roll 6 semesters; High Honor Roll 4 six weeks; Band 1,2,3,4-Secretary 3; Orchestra 1; National Honor Society 3,4.

BONNIE NEUBAUER:

Orchestra 1,2,3,4; Operetta Orchestra 2,3; We-Go Ego 4-Secretary 4.

MARY O'KANE:

Senior Play properties; Transferred from Bascobel, Wisconsin, 4.

MARTINE OLSEN:

Challenge Staff 1,2; Pep Club 2,3,4; Glee Club 3,4; Operetta 3.

CHARLENE OSGOOD:

Junior Play Art; Glee Club 1,3; Operetta 3.

JAMES OWENS:

Wrestling manager 2; Operetta stagehand 3.

JUDY PARTEE:

G.A.A. 1,2; F.N.A. 4; Red Cross 3; Art Club 4; Pep Club 1,2,3,4; Band 1,2,3,4; Orchestra 1,2,3,4 Operetta scenery 3; We-Go Ego 3.

VIRGINIA PERKINS:

Challenge Staff 2; Art Club 2,3; Pep Club 1,2,3,4; Junior Play Cast; Senior Play Assistant Director; Band 1,2,3; Glee Club 1,2,3.

EVELYN PETERS:

F.N.A. 4-Secretary 4; Pep Club 2,3,4; Senior Play Cast.

CHARLOTTE MARIE RASMUSSEN:

Pep Club 2,3,4.

BONNIE RATEIK:

Challenge Staff 3; Art Club 4; Pep Club 4; Orchestra 1,2,3,4; Operetta Orchestra 2,3.

MARY SUE RAYMOND:

G.A.A. 1; Pep Club 1,2,4; Challenge Staff 1,3; We-Go Staff 1,2; Student Council 1,2,4; Student Council Alternate 3; Junior Play Cast; Senior Play Cast; Glee Club 1,4.

Mr. Owen gives us advice about our future.



THOMAS REED:

Student Council 1,2,3,4 Junior Play Cast; Senior Play Cast; Honor Roll 6 semesters; Band 1,2,3,4; Orchestra 1,2,3,4; Operetta Cast 2,3; We-Go Ego 3,4-Vice-President 4; National Honor Society 3,4.

FREDRICH REUER:

Class President 1,2,3,4; Student Council 1,2,3,4; Junior Play Cast; Basketball 1,2,3,4; Football 1,2,3,4; Baseball 1,2,3; Honor Roll 6 semesters; Hall Monitors 3,4; Boy's State 3.

JOAN ROLLAND:

Pep Club 3; Honor Roll 4 semesters.

TIMOTHY ROOT:

We-Go Math Club 4; Football 3; Basketball 1,2,3; Track 2,3; Tennis 1,2; Honor Roll 1 semester; Band 1,2,3,4; Orchestra 1; Conservation Camp 3; Glee Club 4.

THOMAS RUNOWSKI:

Executive Council 4; Transferred from Elmhurst, Illinois, 3.

BEVERLY SCHLICK:

Spanish Club 1; F.T.A. 4; Red Cross 2,3; Pep Club 4.

BONNIE JEAN SCHRAMER:

G.A.A. 1,2,3; Pep Club 4; Glee Club 1,2,3,4; Operetta 2,3.

SYLVIA SCHRAMER:

G.A.A. 1,2,3; Pep Club 4; Glee Club 1,2,3,4; Operetta Cast 2,3; Honor Roll 2 semesters.

CAROLYN SCHROEDER:

F.N.A. 4; Red Cross 4; Transferred from Chicago, Illinois, 3.

KEITH SCHULTZ:

Challenge Staff 4; We-Go Staff 2,3; Student Council 3; Student Council Alternate 1,2; Honor Roll 1 semester; Conservation Camp 3; Glee Club 1,2,3; Operetta Cast 2.

LORETTA SEELEY:

G.A.A. 1,3,4; Challenge Staff 3,4; Student Council Alternate 4; Pep Club 1,3,4; Attended St. Francis for Sophomore year.

DANIEL SHARP:

Senior Play properties; Football 1,2,3,4; Basketball 1,2; Track 1; Baseball 2,3.

CHARLENE JOYCE SIEVERT:

F.N.A. 4; Challenge Staff 3,4; Red Cross 3,4; Art Club 3,4-Secretary 4; Pep Club 2,3,4; Glee Club 1,2,3,4; Operetta 2,3.

RICHARD M. SINDLER:

Transferred from Chicago, Illinois 3.

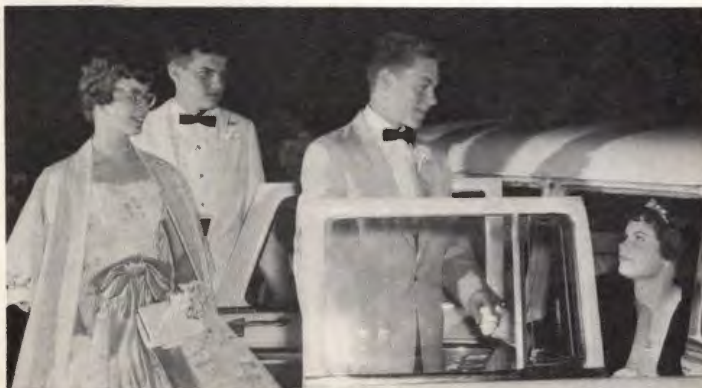
BARBARA SMITH:

G.A.A. 3,4; Challenge Staff Business Manager 4; We-Go Math Club 3,4-Secretary 4; Student Council Alternate 3; Pep Club 2,3,4; Junior Play publicity; Senior play publicity; Honor Roll 6 semesters; High Honor Roll 8 six weeks; National Honor Society 3,4; We-Go Staff 3.

WILLIAM SMITH:

Transferred from Wheaton, Illinois, 2.

Janet Klien and Roger Mendriski wait as Lance Hittman assists Loretta Seeley before they all go to the Junior Prom.

**RAYMOND SNYDER:**

Varsity Club 4; Baseball Manager 2,3.

DORIS JEAN SPECK:

F.T.A. 1,2; Challenge Staff 2; Red Cross 3,4; We-Go Staff 2,3; Art Club 2,3; Pep Club 2,3.

GLENN SPONHOLTZ:

Varsity Club 2,3,4; Pep Club 3,4; Basketball 1,2,3,4-Co-Captain 4; Track 1,2,3,4; Honor Roll 1 Semester.

BARRY STARK:

Hall Monitor 4.

DICK STEEL:

Chess Club 3,4; Varsity Club 4; Pep Club 4; Junior Play properties; Senior Play properties; Football 1,2,3,4; Basketball 1; Glee Club 1.

JUDY MARIE STEFANIE:

Spanish Club 1,2-Treasurer 2; F.T.A. 3,4; We-Go Math Club 4; Honor Roll 1 semester; Conservation Camp 3.

FRED TAYLOR:

We-Go Math Club 4; Pep Club 4; Baseball 2; Transferred from Wheaton, Illinois, 2.

SUSAN THALMAN:

Senior Play publicity; Honor Roll 2 semesters; Hall Monitor 3.

EDWARD THIELEN:

Chess Club 3,4; Football 1,2,3; Basketball 2; Baseball 2,3; Wrestling 3,4; Hall Monitor 3,4.

GARY THIELK:

Chess Club 3,4; Football 1,2,3,4; Wrestling 1,3,4; Hall Monitor 3,4.

JAMES ALLEN THOMPSON:

Student Council 1,2,3,4-Secretary 3, President 4; Junior Play Cast; Tennis 2; Honor Roll 4 semesters; Hall Monitor 4; National Honor Society 3,4.

KATHLEEN LOIS THOMPSON:

G.A.A. 1,2,3,4-Board 3,4; Challenge Staff 1,2,3; Pep Club 1,2,3,4-Secretary 3, Vice-President 4; Cheerleader 2,4; Honor Roll 5 semesters; Cheerleader Camp 4.

PATRICIA VANWALLINGHAM:

Spanish Club 1; G.A.A. 2,3,4-Board 3; Pep Club 3,4; Senior Play publicity; Band 1,2,3,4; Orchestra 1,2; Operetta 2.

MARY VENECEK:

G.A.A. 1,2,3,4; Challenge Staff 4; We-Go Staff 4; Red Cross 4-Secretary 4; Executive Council 4; Pep Club 1,2,3,4; Junior Play publicity; Honor Roll 4 semesters; Hall Monitor 3,4; Queen of Prom.

JOHN WALKER:

Basketball 2; Tennis 1; Band 1,2,3,4-Vice-President 3, President 4; Orchestra 1,2; Music Camp 3; Glee Club 1,2,3,4; We-Go Ego 4; Operetta 2,3.

JUDITH ANN WELTMAN:

G.A.A. 3; We-Go Staff 3; Art Club 4; Pep Club 3; Red Cross 4; Transferred from Chicago, Illinois 3.

CONNIE WIESBROCK:

Transferred from Colorado Springs, Colorado, 4.

RAYMOND WOOD:

Pep Club 4; Football 1,2; Baseball 2.

NANCY LEE WOOLCOTT:

Spanish Club 1,2; Challenge Staff 1,2; Pep Club 1,2,3,4; Glee Club 1,2,3,4; Operetta 2,3.

SHIRLEY WURTZ:

Challenge Staff 4; Pep Club 1,2,3; Junior Play Make-up; Honor Roll 5 semesters; Hall Monitor 4; Glee Club 1,2,3.

MARGO YINGST:

Pep Club 1; Glee Club 1,2.

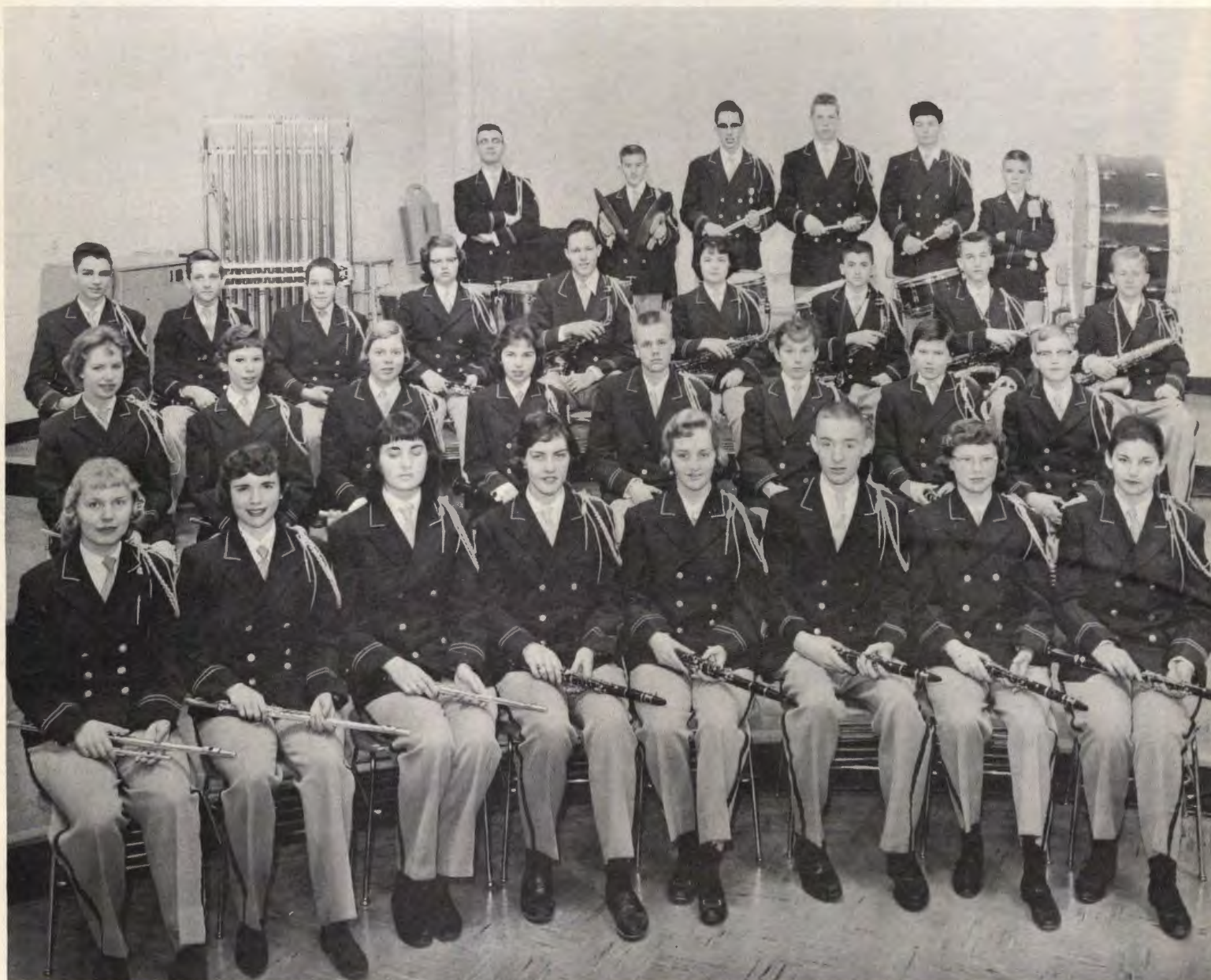
ELODIA ZAMORA:

Spanish Club 2.



REALIZATIONS

CONCERT



Jack Walker, president; Gerry Timm, vice-president.

First Row: Judy Donahue, Judy Aitken, Ann McGreahan, Marion Hensel, Mary Miller, Mike Ball, Sharon Nelson, Barbara Scharf.

Second Row: Maureen Franklin, Valerie Leslie, Maja Knutson, Patsy VanWallingham, Fred Para, Bethel McClung, Mary Alice Grubner, Ronnie Anderson.

Third Row: Harold Giese, Paul Miller, Jim Newman, Mary VanNess, Don Paulson, Lorra Hutson, Jim Lewis, Bill Stillwell, Marlowe Woolcott.

Fourth Row: Jack Walker, Jim Stevens, John Groustra, Fred Johnson, Rick Hagen, Tom Aitken.

BAND



First Row: Roberta Roloff, Judy Bergstrom, Lois Messer, John Neumister, Dave Sauer, Bill Stewart, Richard Giese.

Second Row: Tom Reed, Renee Stirber, Duncan McLeod, Lois Grubner, Charlene Yagel, Judy Par-tee, Betty Holman, Roberta Hess, Lenard Gangstan.

Third Row: Tom Overton, Tim Root, Nancy Rohr, Neil Ronzheimer, Fred Fahlsing, Don Fotre, John Spurgin, Tom Kopacz, Renny Hughes, Gerry Timm.

Fourth Row: John Brader, Randy Cue, Roy Knutson, Ron Mackert, Mr. Littell.



Lois Ann Grubner, librarian; Roberta Roloff, secretary.

PEP BAND



Front Row: Ed Johnson, Renée Stirber, Tim Root, Don Paulson.
Second Row: Larry Stevenson, Bill Steward, John Neumeister, Fred Falsing.
Third Row: Tom Kopacz, Rick Hagan, John Groustra, John Walker.

MAJORETTES



Madelyn Schommer, Karen Kammes, Captain, Sue Siekmann.

MAJOR



John Azer

To begin their fall activities, the band played at the home football games and marched in the Homecoming parade. They planned to play at Northwestern University Band Day, but rain made complications; however, they did march in the Christmas Parade. Their spring activities commenced with the February Concert; this was followed by these events: The Spring Festival Concert in March, the Fox Valley concert in April, the May concert, and the Memorial Day Parade. The climax of their year was playing for the Commencement Services. Representatives of the band also participated in various concerts and contests.

BAND

ORCHESTRA

The orchestra started their busy year by providing music for the Veterans' Day Assembly. In November, the string orchestra played in a recital, and in December the entire orchestra presented a Christmas concert. The orchestra's activities in 1960 included the following: The Spring Festival concert in March, the Fox Valley concert in April, the May concert, and the production of *Oklahoma* in May. The String orchestra presented an assembly at the Junior High, and the entire orchestra climaxed their busy year by playing for Baccalaureate. Representatives of the orchestra also played in various concerts and contests.

WE-GO



Ed Johnson, president; Renée Stirber, secretary; Marion Hensel, librarian.

Front Row: Kathy Rupp, Carolyn McGawn, Dan Messer, Lois Warkintin, Marion Hensel.

Second Row: Kathy Jahns, Sue Owen, Bonnie Neubauer, Maja Knutsson, Maureen Franklin, Ann McGraham.

Third Row: Lois Ann Grubner, Judy Partee, Charlene Yagel, Betty Holman, Richard Giese, Bill Stewart, John Neumeister, Roberta Hess.

Fourth Row: Don Fotre, Tom Reed, Ed Johnson, Jim Stevens, David Giese.

ORCHESTRA



First Row: Duncan McLeod, Fred Johnson, Karen Madsen, Bonnie Rateik, Diane Miller, Dianne Hubbard.

Second Row: Lois Messer, Richard Born, Roberta Roloff, Bethel McLung, Mary Grubner, Ronald Anderson, Tony Gabor, Roy Knutsson.

Third Row: Don Paulson, Nancy Rohr, Barb Scharf, Renee Stirber, John Spurgin, Tom Kopacz, Renny Hughes.

Fourth Row: John Brader, Randy Cue, Ronald Mackert, Mr. Howard.



Bonnie Bartha, Marion Hensel, Kitch Rupp.

CHORUS



Third Row: Carol Forkin, Nancy Brown, Diane Baxter, Susanna Grubbs, Judy Mileski, Mary Farley, Nancy Woolcott, Rae Ann Hitzemann, Bonnie Schamer,

Fourth Row: Karen Halfpenny, Charlene Sievert, Andrea Tinnes, Steve Nail, Rich Schamm, Wayne Bergstrom, Ron Rotramel, Mark Hawkins, Joy Meriam, Cheryl Rupp, Janice Marshall.

First Row: Mary Dodge, Jane Schomer, Martine Olsen, Robert, Compton, Bill Robatzek, Kay Stroker, Sylvia Schamer, Mary Sue Raymond, Mr. Littell.

Second Row: Sharon Tinnes, Catherine Sachse, Helen Mueller, Judy Dunnet, Bill Lillie, Jack Walker, Bonnie Roberts, Cecelia Doyle, Linda Nelson, Gloria Zissler.



This ensemble represented the chorus at the District Music Contest: Mary Farley, Jack Walker, Gloria Zissler, Wayne Bergstrom.



Wayne Bergstrom, President; Nancy Woolcott, Secretary; Nancy Brown, Librarian; Mary Farley, Vice-President.

VARSITY BAND



Richard Nagel, Edwin Wold, Ralph Nagel, John Wyatt; back: Mr. Littell.

BOYS CHORUS



Seated: Tom Reed.
Standing: Jack Walker, Ron Mackert, Tim Root, Duncan McLeod, Roy Knutsson, Joe Watanabe, Ed Johnson.

FRESHMAN GIRLS' CHORUS



Front Row: Judy Turner, Margaret Rainobe, Diane Gibson, Pat Atkinson, Bonnie Williams, Mr. Littell.

Second Row: Judy Luttrell, Beverly Timm, Ilona Pinzke, Farraday Melin, Phyllis Dieter.

WE-GO E GO



First Row: Jack Walker, Ron Mackert, Mike Ball, Don Paulson, Wayne Bergstrom, Gerry Timm, Tony Gabor, Ed Johnson, Lois Messer.

Leslie, Kitch Rupp, Diane Miller, Renee Stirber, Karen Madsen, Mr. Howard.

Third Row: Bonnie Neubauer, Mary Miller, John Spurgin, Marion Hensel, Henriette Willeumier, Tom Reed, Carol McGawn, Gloria Zissler, Nancy Rohr.

Second Row: Mr. Littell, Lois Grubner, Maja Knutsson, Valerie



SPANISH CLUB

Standing: Gloria Campos, Juanita Fitzsimmons. Seated, First Row: Irma Castillo, Susita Winkler, Juanita Luttrell, Second Row: Darby Shaw, Catalina Brown, Pablo Miller, Last Row: Anita Zarate, Miss Muzzo.

ART CLUB



Seated: Kathy Hoskinson, Steve Bayer, Mary Ann Schramer, Virginia Perkins, Roger Mendriski, Georgia Harbelis, Jim Snyder. Standing: Muriel Allen, Bob Kubian, Miss Krauss.



And useful, too



Lecture at Art Institute

STUDENT COUNCIL



Front Row, left to right: Phyllis Hadfield, James Thompson, Miss Mahoney, John Groustra, Stephanie Contino.

Second Row: Candy Stults, Rae Ann Hitzemann, Pat Carey, Mary Sheahan, Janet Leveyy, Kay Stroker.

Third Row: Paul Miller, Chris Christiansen, Tom Reid, Bill Spencer, Larry Nelson, Ed Johnson.

Fourth Row: Mark Hawkins, Dick Mayer, Dennis Michael, Mike Ball, Fred Reuer, Reggie Haag.



Front Seat: Bill Alexander, Sharon Korwoski, Shirley Wurtz, Dick Bell.
Back Seat: Ed Johnson, Stevie Contino, Mary Sue Raymond, Tom Reed.

The main item on the fall agenda for the student council was that of acting as clearing house for the homecoming activities. The council sold mums and publicized the festivities in the Press.

Our council sent delegates to the IASC Summer Workshop, Big 8—Little 7 Subdistrict Conference, the North-East, North-West District Convention, and the State Convention.

The council members worked on and planned a student council dinner inviting all council members, their parents, the faculty and the School Board. Mr. Warkow, a co-ordinator of the IASC, gave a talk involving the unity of the purposes and goals of the council members, parents, faculty and the School board.

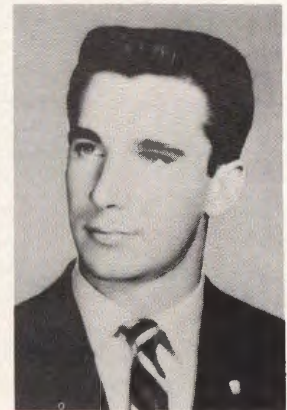
NATIONAL HONOR SOCIETY



Seated: Judy Donahue, Ed Johnson, Tom Reed, Carolyn Fairbank, Aitken, Ramah Nagel, Barb Smith, Sharon Nelson, Mr. Holcombe.
Standing: Cindy Bancroft, Mary Farley, John Groustra, Judy



The National Honor Society is organized to promote scholarship in the school. It is sponsored by Mr. Holcombe and its main activity is the assembly at which the new members are inducted. This year thirty-one new members were honored. At the assembly speeches were given on the history of N.H.S. and on the four following characteristics: scholarship, leadership, service, and character. These are the basis by which the teachers chose the members.



Richard Bell, President.

WE-GO



Seated: Beth Goodwin, Andie Tinnes, Pat Carey, Mary Sheahan, Kathy Weimer. Standing: Carol Hermin, Madeline Gillgasch, Mr. Morrison, Jim Madden, Dick Mayer, Bill Mertes, Chuck Warning, Sue Jellison, Rita Thompson, Kathy Jahns, Nancy Nielsen.



Pat Carey, Editor-In-Chief; Mr. Morrison, Advisor.

In one short, explosive year the *WE-GO*, our school paper, rose from a small town mimeographed paper to the best high school newspaper in the conference. The editors last year were all seniors with the exception of one sophomore. As the year progressed the system of training assistant editors to possibly fill the vacancies the next year was adopted. The editorial staff now has a junior, a sophomore, and a freshman added to its ranks. With all these energetic people working on it, a *WE-GO* original, Bermuda Day was an overwhelming success. It is hoped that it will become an annual affair.

The paper began this year as a member of the Quill and Scroll Society, an honorary organization represented all over the nation. The sophomores now dominate the staff list, but run second to juniors as editors. Assistant editors were again appointed, relieving the editors of much of the strain.

Spirits are just as high as the aims set for next year. With continued determination and work these goals will be reached.

CHALLENGE



Front: Sharon Nelson, Judy Aitken, Barb Smith. Second: Barb Scharf, Marsha Sauber, Sue Owen, Karen Hagan, Mr. Severe. Back: Keith Shultz, Richard Bell.



Charlene Yagel, Kitch Rupp, Loretta Seeley, Bette Hansen, Betty Holman, Charlene Sievert, Shirley Wurtz, Mary Venecek.

FUTURE NURSES

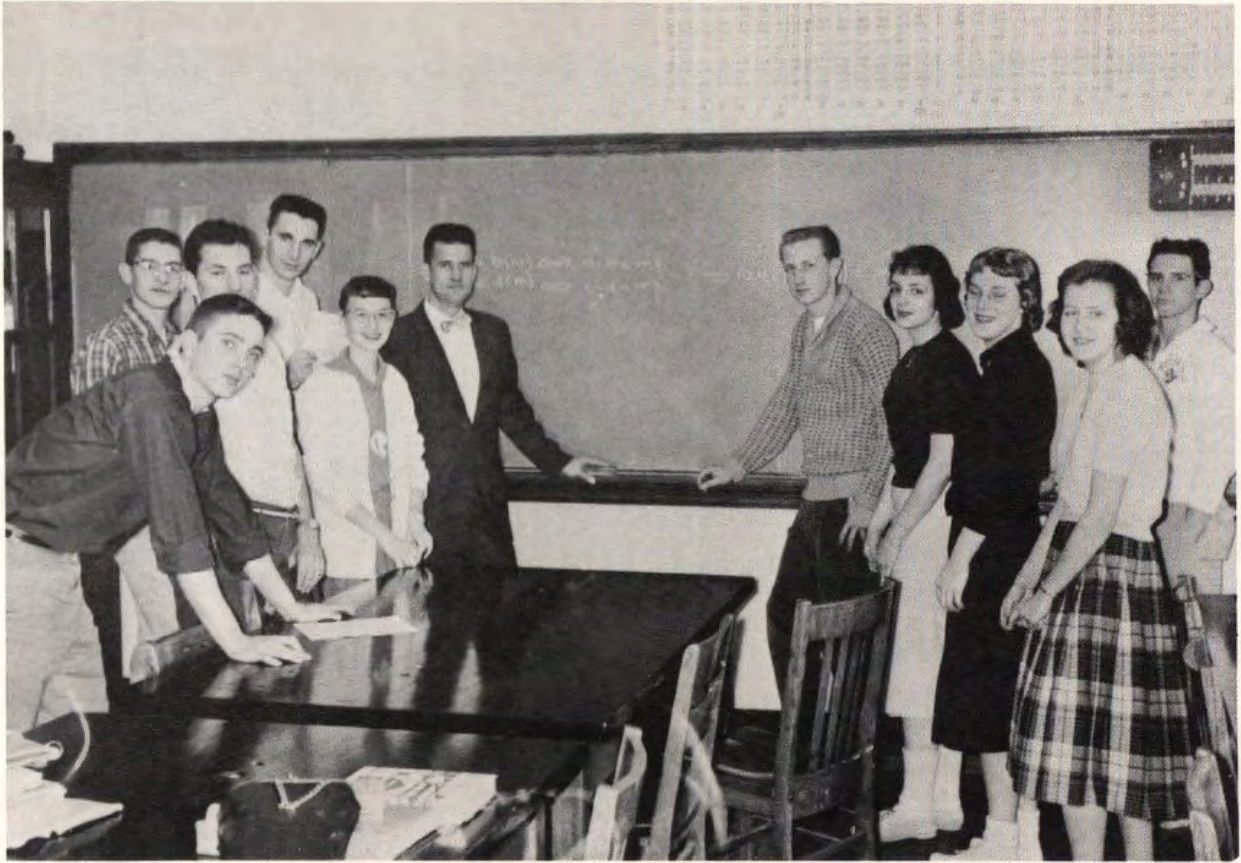


Seated: Beverly Schick. Standing: Kathy Klien, Sally Kline, Nancy Spears, Barbara Piper, Anita Zarate (hidden), Charlene Sievert, Sharon Magee, Jill MacKenzie, Mrs. Anderson.

FUTURE TEACHERS OF AMERICA



First Row: Joanne Perez, Dianne Miller, Pat Peterson, Bobbie Kay Robinson, Valerie Pinkert.
Second Row: Judy Stefanie, Maureen Franklin, Rae Ann Hitzemann, Jim Snyder, Tom Stafford.
Third Row: Mr. Nemanich, Bob Price, Ron Mackert, Shirley Blum, Betty Ballard.
Last Row: Renny Hughes, Eugene Schlick, Noemi Rangel.



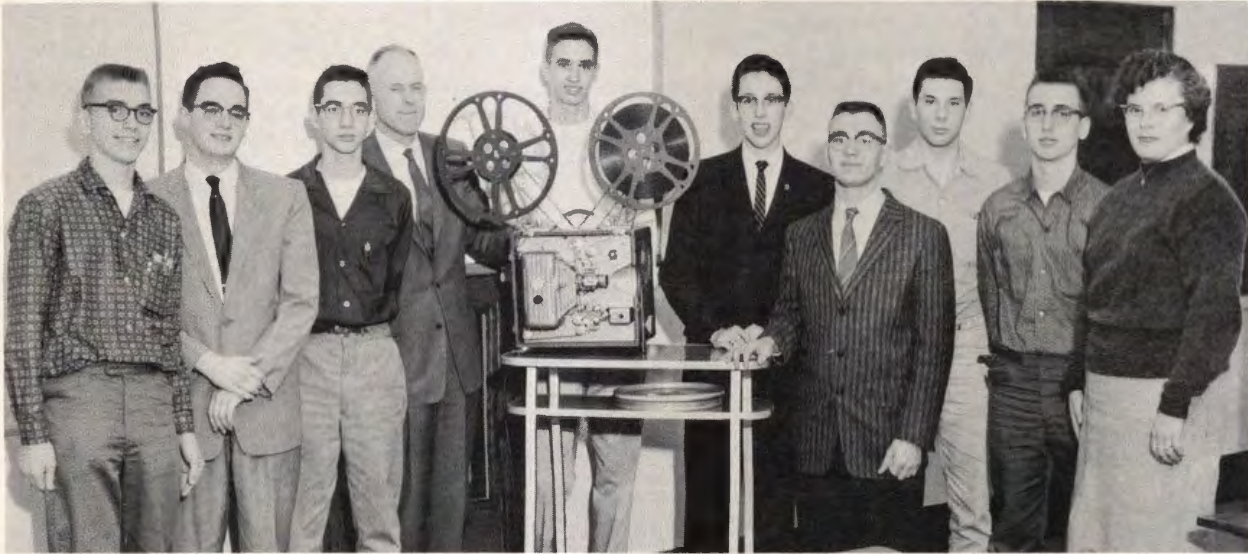
Fred Taylor, Berry Lucht, Tim Root, Dick Bell, Diane Bauer, Mr. Murphy, Bill Alexander, Barb Smith, Eleanor Hadfield, Judy Stephanie, Bob Fowler.



Diane Bauer, Barb Smith, and Eleanor Hadfield work a difficult problem on the board.

MATH CLUB

STUDENT



PROJECTION OPERATORS

Robert King, Jim Thompson, Ron King, Mr. Barthell, Bruce Berkes, John Groustra, John Walker, Tim Root, Dick King, Sharron Magee.



Bill Mertes, Keith Schultz.

HALL MONITORS

Dave Bartush	Ed Thielen
Jane Cadle	Mary Venecek
Shane Conway	Bonni Kimmel
Barry Stark	Karen Schoppe
Don Baumgartner	Bill Thielen
Eleanor Hadfield	Bonnie Bitter
Steve Bayer	Bob Hansen
Leanne Mantz	Dick Mayer
Judy Adamson	Ray Snyder
Pete Modaff	Joe Watanabe
Carolyn Fairbank	Leonard Heinberg
Madeline Gillgasch	Gary Mantz
Bev Freick	Richard Vedder
Don Hopkins	Shirley Wurtz
James Thompson	Sandy Jedlovec
Alan Gorick	Malcolm Grierson
Robert Kubian	Bob Langtry
Cindy Bancroft	Leeina Lovellette
Bill Mertes	Karen Brown
Fred Reuer	Chuck Warning
Bob Hahn	

SERVICES



LIBRARY AIDS

Mary Creedon, Miss Koupal, Diane Gladding, Jill MacKenzie, Ramah Nagel, Judy Stetanie.

CAFETERIA HELP

John Azer
Jim Rakow
Dick Mayer
Mary Venecek
Kathy Weimer
Nancy Nielsen
Lorri Hutson
Kathi Kelly
Mary Sheahan
Larry Johnson
Leroy Johnson
Sandy Loose
Bob Weaver



Nancy Nielsen, Judy Aitken.

GIRLS' ATHLETIC



Front Row, left to right: Miss Fink, Carolyn Fairbanks, Roberta Roloff, Sharon Karwoski, Jane Cadle, Jane Schommer, Kathi Kelly, Kathy Weimer, Sandra Loose, Loretta Seeley, Mary Korona.

Second Row: Pat VanWallingham, Leanne Mantz, Sharon Nelson, Betty Holman, Lois Warkentin, Sue Owen, Maureen Franklin, Judy Donahue, Janet Levey, Phyllis Hadfield, Lori Hutson.

Third Row: Diana Bauer, Mary Sheahan, Cindy Bancroft, Nancy Nielsen, Lois Messer, Ester Schingoethe, Liz Arens, Karen Madsen, Bonnie Bitter, Sharon Tinnes, Beverly Freick, Janet Klein, Kathy Falbo.

Fourth Row: Charlene Yagel, Karen Kammes, Janet Kleinwachter, Eleanor Hadfield, Sally Klein, Sandy Wind, Nancy Hess, Henriette Willeumier, Marion Hensel, Lynn Slorahn, Francis May, Barbara Smith, Kathy Thompson, Barbara Scharf.



"Take care, Gals!"

The Girls' Athletic Association is organized to promote better sportsmanship among the girls and to allow the freshmen to get to know the sophomores, juniors, and seniors and vice versa. This year Miss Fink has been the sponsor. Its officers have been Cindy Bancroft, president; Judy Donahue, vice-president; Sharon Tinnes, secretary; and Andie Tinnes, treasurer.

ASSOCIATION



First Row: Mary Alice Grubner, Kathie Jahns, Jackie Atwell, Candy Stults, Bobbie Kay Robinson, Beth Goodwin, Carol Hermin, Diane Gladding, Marsha Alm, Ginny Schamer, Carol Gent, Rose Hill, Karen Kusma, Farraday Melin.

Second Row: Anita Zarate, Judy Bergstrom, Kathy Sproat, Diane Cawthorne, Gloria Campos, Valerie Leslie, Jackie Chada, Sharon Rothstein, Marjorie Herman, Elizabeth Howieson, Pat Sharp Jeanine Duesk, Diane Miller.

Third Row: Sharon Stephen, Kay Stroker, Madelyn Schommer, Marsha Sauber, Vicki Dierking, Sharon Conley, Bonnie Roberts, Jamie Colford, Pat Murphy, Rita Krosel, Leslie Knight, Carol Spahn, Pat Carey, Roberta Hess.

Fourth Row: Carolyn McGawn, Rae Ann Hitzemann, Joanne Verselder, Rita Thompson, Pennie Punter, Jeannine Ermish, Leona Kowalski, Joy Meriam, Andie Tinnes, Linda Nelson, Nancy Rohr, Calmae Hinz, Carol Forkin, Karen Allen.

After-school activities have included soccer, speedball, badminton, basketball, apparatus, volley-ball, bowling, and soft-ball. Other G.A.A. sponsored activities have been a picnic, formal initiation and banquet, play night for all members, alumni play night, and the G.A.A. girl-ask-boy party entitled "Beau and Belle Ball."



"Are they far away, Ginny?"



First Row: Chuck Warning, Chuck Hindes, Chuck Wilde, Kveck, Larry Johnson, Tom Hodson, Richard Giese,
 Joe Genovesi, Don Duszynski, Jim Rakow.
 Second Row: Bill Mertes, Steve Bayer, Ray Snyder, George Kert, Dick Lenertz, Gerry Timm, Glenn Sponholtz.
 Third Row: Mr. Price, Andy Garbacz, Jim Madden, Ron Mackert, Dick Lenertz, Gerry Timm, Glenn Sponholtz.



Andy Garbacz, President.

V
 A
 R
 S
 I
 T
 Y
 C
 L
 U
 B



Varsity Kathy Thompson; Sharon Tinnes; Jayne Schommer; Peanut Fairbank, captain; Cindy Bancroft.

C
H
E
E
R
L
E
A
D
E
R
S



Frosh Soph: Front: Vicki Dierking; Kay Stroker; Jamie Colford; Back: Bonnie Roberts; Marsha Sauber, captain.

RED CROSS



Seated: Kathy Hoskinson, Judy Weltman, Anita Zarate, Doris Helen Creedon. Standing: Bill Sabathne, Miss Krauss, Mary Speck, Candy Stults, Kathy Sproat, Rosemary McKenney, Mary Venecek, Carol Spahn, Jim McDonald.

PEP BOARD



First Row: Marsha Sauber, Pam Rogers, Pat Carey, Karen Kammes, Bev Frieck.
 Second Row: Miss Caliendo, Carolyn Fairbank, Kathy Thompson, Kathy Weimer, Kay Stroker, Mary Farley.
 Third Row: Janet Levey, Bill Mertes, John MacKenzie, Jim Madden, Andy Garbacz, Steve Neill, Shane Conway, Larry Nelson, Jenine Dusek.



"THE HAPPIEST



Kneeling: Malcolm Grierson, props; Judy Aitken; Bonni Kimmel; Virginia Perkins; Karen Kruse; Andy Garbacz, props.
 Sitting: Mary Sue Raymond; Dick Bell; Janet Klein; Fred Reuer; Carolyn Fairbanks.
 Standing: Judy Donahue; Shelly Stuhlsatz; Bob Hansen; Jim Thompson; John Groustra; Barry Lucht; Les Davis; Mr. R. Hanley; Bill Alexander; Tom Reed; Ramah Nagel.

CAST

EMMA	Carolyn Fairbank
.....	Janet Klein
WINNIE	Bonni Kimmel
LIVINGSTON BIDDLE	John Groustra
JOE MANCHESTER	Bill Alexander
TONY BIDDLE	Barry Lucht
CORDELIA BIDDLE	Shelley Stuhlsatz
CHARLIE TAYLOR	Jim Thompson
ANTHONY J. DREXEL BIDDLE	Dick Bell
.....	Fred Reuer
AUNT MARY DREXEL	Virginia Perkins
COUSIN LUCY RITTENHOUSE	Ramah Nagel
ANGIER DUKE	Tom Reed
O'MALLEY	Dick Bell
.....	Fred Reuer
MRS. BENJAMIN DUKE	Mary Sue Raymond
FOOTMAN	Les Davis

The class of 1960 presented, as their Junior Play, Kyle Erickson's "The Happiest Millionaire," a comedy in two acts. The play evolves around the lives of an eccentric multi-millionaire family of Philadelphia, the Drexel Biddles. Anthony J. Drexel Biddle, the father of the family, is an avid boxing fan, the head of the Drexel Biddle Bible Classes, and a collector of alligators, which he keeps in his home.

The cause of most of the hilarity is Cordy, the daughter for whom it is extremely difficult to find a beau who is acceptable to her family.

The cast, which was directed through six weeks of rehearsal by Mr. R. E. Hanley, presented the finished production April 9 and 10, 1959.

MILLIONAIRE"



"You got him all right—flat as a flounder."



"They'll eat me, Aunt Mary—"



"Give him the one, two, Papa—the one, two."



"RHAPSODY

IN

BLUE"

King and Queen, Tim Root and Mary Venecek.

Sitting, left to right; Sue Jellison, Bob Fowler, Bev Freick, Don Baumgartner.
Standing, left to right; Bill Mertes, Cindy Bancroft, Dennis Roberts, Loretta Seeley, Lance Hittman.



On May 22, 1959, the class of '60 gave its Junior Prom, Rhapsody In Blue. The music was provided by Vern Perry; as the King and Queen, Tim Root and Mary Venecek presided over the festivities. Aided by the class advisor, Mr. Roy Kiiskila, the following committee chairmen worked hard to make a wonderful time for everyone there.

- Bonni Kimmel General Chairman
- Interior Decoration
- Mary Farley Exterior Decoration
- Wayne Bergstrom Music
- Judy Aitken Publicity
- Lance Hittman Refreshment
- Bob Fowler Program
- Dick Bell Master of Ceremonies



Left to right, Sue Jellison, Bob Fowler, Don Baumgartner, Bev Freick.

Dancing in the foreground, Mary Venecek and Tim Root.



A LOOK INTO



Four-A Art Class



Fifth Hour American Government

Third Hour Physics



THE CLASSROOMS

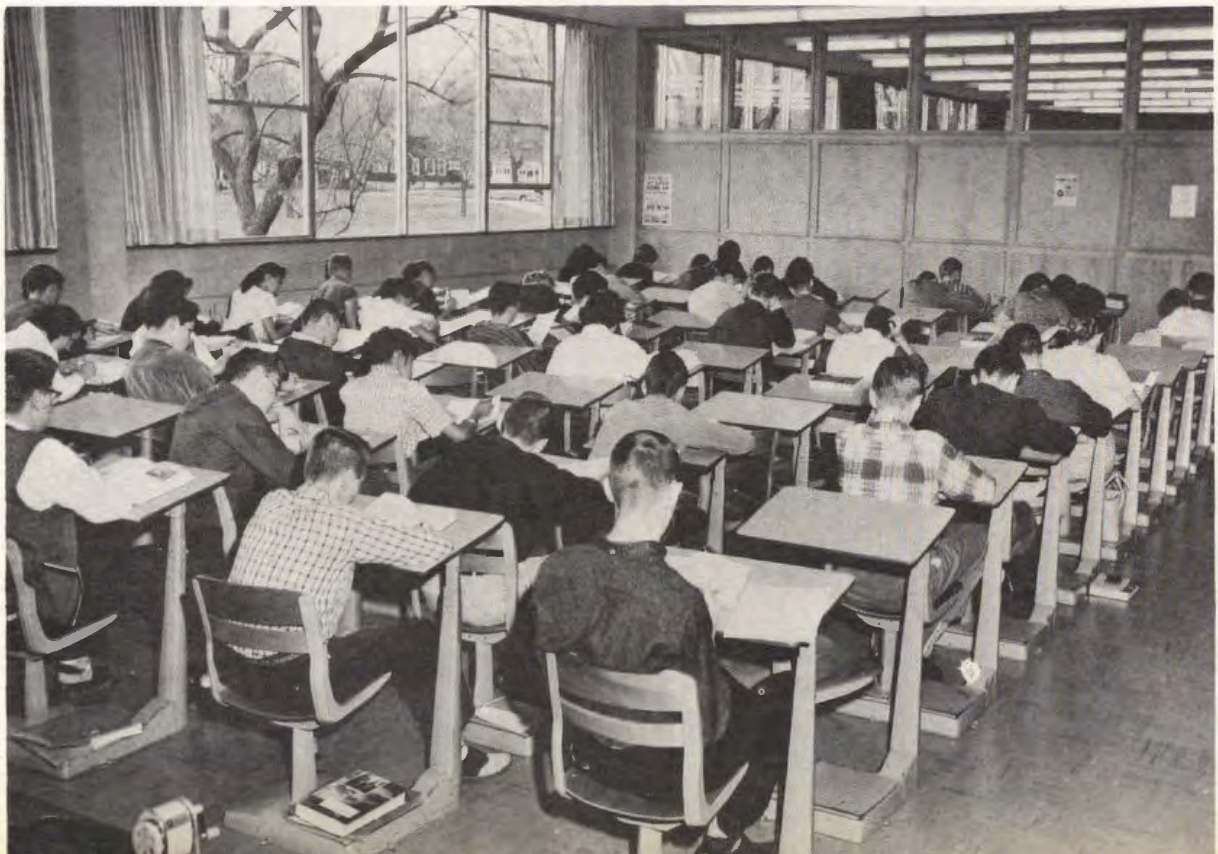


Sue Jellison, Sixth Hour Typing



Four-A Boys P.E.

Sixth Hour Study Hall





"THE WIZARD OF OZ"

MAIN CAST

DOROTHY Bea Wilson
 LION Wayne Bergstrom
 TINMAN Darby Shaw
 SCARECROW Sue Hansow
 ART DIRECTOR Miss Krauss
 DRAMATIC DIRECTOR Mr. Morrison
 CHORAL DIRECTOR Mr. Littell
 ORCHESTRA DIRECTOR Mr. Howard



Left to right: Carol Forkin, Diane Lindeman, Nancy Brown, Martine Olsen, Kathy Weimer.

Left to right, standing: Clayton Nelson, Eddie Johnson, Bea Wilson, Tom Reed, Karen Halfpenny, Herb Buhr, Nancy Brown, Sue Grubbs, Charlene

Sievert. Kneeling: Cecelia Doyle, Barbara Murphy, Mary Corona. Sitting: Kay Stroker, Nancy Woolcott, Bonnie Schramer.



SCHOOL HONORS



Conservation Camp
Keith Schultz



Conservation Camp
Judy Stefanie



Conservation Camp
Tim Root



Cheerleading Camp
Kathy Thompson



Cheerleading Camp
Jayne Schommer



Girls State
Carolyn Fairbank



Boys' State
Dick Bell



Boys' State
Fred Reuer



Boys' State
Bill Alexander



Red Cross Camp
Carol Spahn



Music Camp
Mary Farley



Music Camp
Jack Walker



Music Camp
Kathryn Rupp



G.A.A. Camp
Judy Donahue



G.A.A. Camp
Cindy Bancroft

1959 HOMECOMING QUEEN AND COURT



Left to right: Pat Badowski, Mary Farley, Carolyn Fairbank, Bev Freick, Cindy Bancroft. Background: Senior boys.

On October 23, 1959, Carolyn "Peanut" Fairbank was crowned Queen of the 1959 Homecoming by Fred Reuer, president of the Senior Class. The coronation ceremony was held in the auditorium and was attended by the entire student body. The Queen and her court presided over the Homecoming festivities which included the Homecoming parade, the Friday night game and the Homecoming dance.

"Peanut" and her court are familiar personalities around school. All of these girls devote much of their time and talents to their class and other school activities. The members of the student body have made wise choices in selecting these girls to reign over their Homecoming.



1959

HOME



Class of '61, First Prize



Class of '60



Class of '63



Pep Club

COMING

PARADE



Class of '62



G.A.A.

ASSEMBLY VARIETY



Homecoming Pep Assembly.

F. Sjobiarn, pianist.



Pep talk by Coach Francis.



Public Speaking Assembly.
K. Weimer, L. Hutson.



Presentation of wrestling trophy.



Armistice Day Assembly. Student Council.

CANDID CAMERA



"I've had it!"

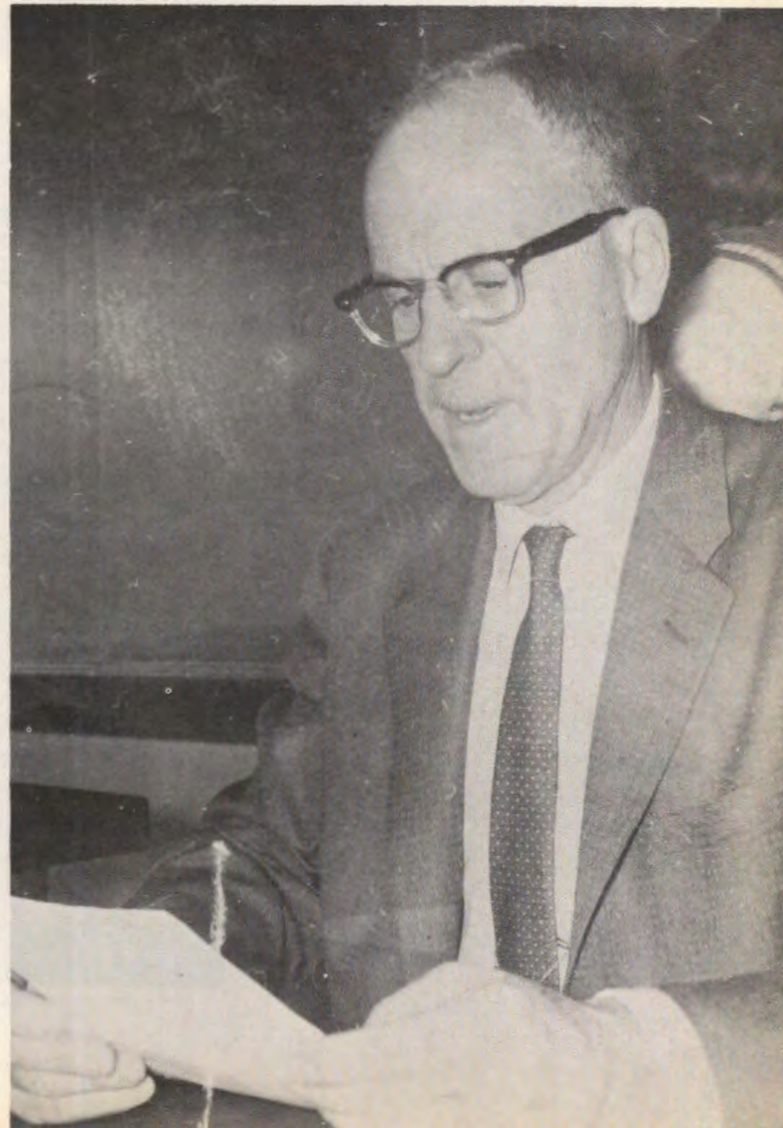


"Where's Andy?"

Quoting Bugs. "There ain't no such animal."



"I really put my foot in my mouth that time!"



CANDID



"...and then he told her that I..."

"How did I ever get into this chess mess?"



"You say you want to join G.A.A.?"

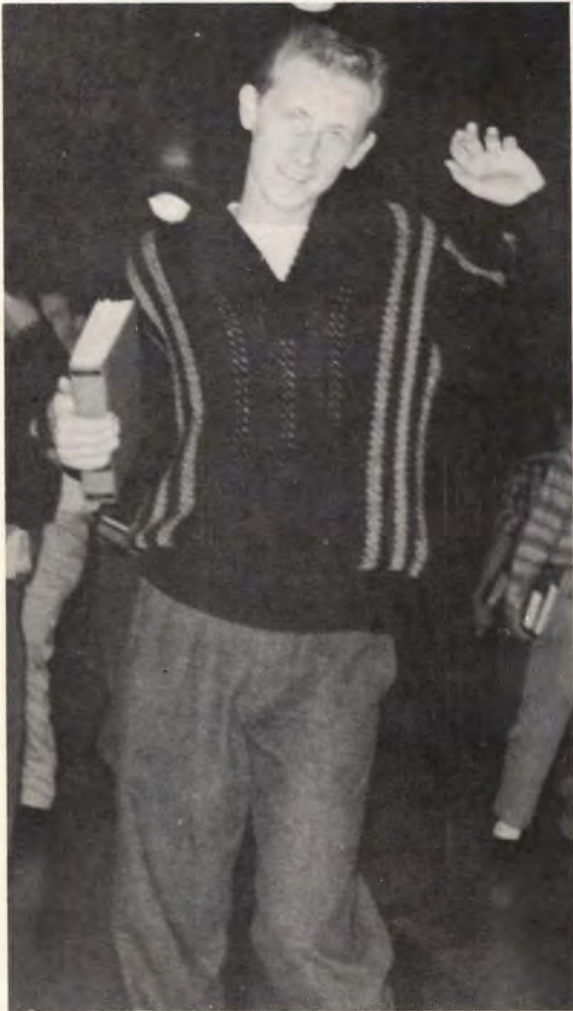
CAMERA



"Oh, that weird Picasso."



"...1 and 2 and 3 and 1..."



"Meet the man on the street."



"Two more points!!!"

"THE GIRLS



"A Zebra?"



"May heaven bless you, Mr. McKittridge."



"Are you married?"
"Are you engaged?"



"They scream when you say Democrat!"

IN 509"



Left to right, kneeling: Bonnie Kimmel; Wayne Bergstrom; Marsha Hawkins; John Groustra; Tom Reed; Evelyn Peters; Malcolm Grierson, props. Left to right, standing: Dick Bell; Ramah

Nagel; Bill Alexander; Gary Mantz; Don Dierking, props; Richard Sindler, props; Barry Lucht; Richard Daleiden, props; Mary Sue Raymond; Virginia Perkins, props; Jill MacKenzie, props.

CAST

MIMSY Mary Sue Raymond and Evelyn Peters
 AUNT HETTIE Marsha Hawkins and
 Karen Halfpenny
 OLD JIM Bill Alexander
 RYAN Gary Mantz
 PUSEY Tom Reed
 MISS FREUD Stevie Contino and Bonni Kimmel
 WINTHROP ALLEN Wayne Bergstrom
 SUMMERS Dick Bell
 JOHNSON Barry Lucht
 ROSENTHAL Ramah Nagel
 FRANCIS X. NELLA Wayne Bergstrom
 AUBREY MCKITTRIDGE John Groustra

The Girls in 509

On November 19 and 20, 1959, the senior class presented their second stage production, "The Girls in 509" by Howard Teichmann. The play was a political satire that told the story of an elderly aunt and her middle-aged niece who spent years living in an old rooming house. During this time, they had not seen anyone except Old Jim, the rooming house's jack-of-all-trades. Their rooms were the refuge they had taken after the family had lost all its money in a political campaign. When the rooming house was to be torn down, the women were finally forced to face the world, which they found drastically changed. Even their political hopes were crushed, but all ended well when the stock certificates they had papered their wall with proved to be very valuable. The cast, directed by Mr. William Johnson, worked long and hard on the play, and the finished product was enjoyed by all.

FALL DANCES



1959 Thanksgiving Dance

Left to Right: Dick Bell, Mary Farley, John Burgess, Pat Badowski.

Below: Shane Conway, Kathy Weimer.

1959 Homecoming Dance







First Row: Chuck Warning, Roy Knutsson, Denny Day, Fred Reuer, Ed Holt, Alan Gorick, Dick Bell, Gary Thielk, Dick Vedder, Sonny Shane Conway, Fred Para, Joe Genovesi. Second Row: Howard Olsen, Macaluso.

VARSITY FOOTBALL

STEVE
BAYER



DICK
BELL



SHANE
CONWAY



DICK
GIESE



LARRY
JOHNSON



ROY
KNUTSSON



DICK
LENERZ



DAN
SHARP



GARY
THIELK





First Row: Bill Haverly, Larry Johnson, Jim Madden, Dick Steel, Don Duszynski, Jim Rakow, Cliff Johnson, Jim Tanzilli, Vince Mann. Second Row: Chuck Wilde, George Kveck, Don Baumgartner, Gerry Timm, Dick Lenertz, Dan Sharp, Dick Giese, Steve Bayer, Tom Hodson, Bill Mertes.

C
O
A
C
H
F
R
A
N
C
I
S



HEAD COACH

C
O
A
C
H
K
Y
G
E
R



LINE COACH

C
O
A
C
H
O
N
E
I
L
L



BACKFIELD COACH

D
O
N
B
A
U
M
G
A
R
T
N
E
R



CO-CAPTAINS

F
R
E
D
R
E
U
E
R



1959 Varsity		
WE-GO	6	Carl Sandburg 40
WE-GO	0	Geneva 19
WE-GO	0	Batavia 24
WE-GO	0	Naperville 32
WE-GO	2	Belvidere 7
WE-GO	0	Sycamore 33
WE-GO	7	St. Charles 19
WE-GO	14	Mooseheart 6
WE-GO	0	Naperville 32

Won 1 Lost 7

The 1959 Football season for the Wildcats was worse than expected. The coaches said that the bad season was due to the fact that the team could not jell into a working unit, however, team spirit remained high. Several Wildcats did receive high honors. Shane Conway was chosen by the Sun-Times sports writers as an all-conference guard. Fred Reuer was chosen by the Tribune sports writers as an all-conference center. The Little Seven sports writers chose Fred Reuer for the center of the second team and also gave honorable mentions to Dick Lenertz and Dan Sharp.



First Row: Mike Thompson, Jerry McVicar, Wayne Rasmussen, Jim Steel, Don Fotre, Dave Falino, Jim Thompson, Chuck Works, Wayne Wind, Darrell Colford, Fran Kammes, George Nickols, manager. Second Row: Angelo Falbo, Dan Howieson, Bob Radnuzel, John Howieson, Leroy Johnson, Bob McCoy, Rog Hammer, Dick Jahns, Jim Hammond, George Watanabe, Don Sprague, Leon Partee, Vince Vidlak, Mike Smallman, Chris Sabathne. Third Row: Tim Seeley, Elliot Gage, Mark Hawkins, Bob Weaver, Dan Madison, Dick Weckel, Pat Alden, Renny Hughes, Bill Szorc, Bill Thime, Connie Chmielewski, Reggie Haag, Bob Owens. Fourth Row: Larry Sauer, Bob Price, Ken Schlueter, Fred Johnson.

FROSH-SOPH FOOTBALL



COACH DeMAY



COACH JAHNS



COACH PRICE

1959

1959 Fresh-Soph Football Record

WE-GO	14	Carl Sandburg	0
WE-GO	0	Geneva	34
WE-GO	0	Batavia	7
WE-GO	0	Naperville	32
WE-GO	6	Belvidere	34
WE-GO	0	Sycamore	21
WEGO	13	St. Charles	26
WE-GO	0	Mooseheart	12
Won 1 Lost 7			

SCHEDULE

The Wildkits had a rather poor year. They failed to catch the spark that inspired them to win their first game. Several injuries also lessened their potential power. However, things look better for next year's fresh-soph because of a very powerful freshman team moving up.

This year's Freshman team was the one bright light in a dim football season; They had one of the best and most powerful freshman teams on the school's records. Their one defeat was by Geneva whom they beat later in the season.



First Row: Wayne Rasmussen, Jim Steel, Don Fotre, Dave Falino, Jim Thompson, Wayne Wind, Darrel Colford, Fran Kammes, George Nickols, manager.

Second Row: Angelo Falbo, Mike Thompson, Bob McCoy, Rog Ham-

mer, George Watanabe, Don Sprague, Leon Parteen Vince Vidlak.

Third Row: Jerry McVicar, Elliot Gage, Mark Hawkins, Tim Seeley, Ken Schlueter, Bill Szorc, Bill Thime, Reggie Haag.

FRESHMAN FOOTBALL

1959

WE-GO	6	St. Charles	0
WE-GO	6	Mooseheart	2
WE-GO	21	Kaneland	7
WE-GO	0	Geneva	12
WE-GO	14	Batavia	0
WE-GO	20	Geneva	7
WE-GO	20	St. Charles	0

Won 6 Lost 1

RECORD

First Row: Coach Jahns, Tim Seeley, Leroy Johnson, Connie Chmielewski, Pat Alden, George Nickols, manager.





Coach Francis, Don Baumgartner



Pass Complete to Sharp.

FOOTBALL SNAPS

Giese and Thielk attempt to down Smith of Sycamore.





First Row: Chuck Wilde, Gerry Timm, Tom Hodson. Second Row: Andy Garbacz, Ed Holt, Keith Sponholtz, Les Davis. Third Row: Coach O'Neil, Mike Lawrence, Dick Lenertz, Bill Doyle, Glenn Sponholtz, Fred Reuer, Don Baumgartner, Cliff Johnson, Ron Mackert, manager.

Coach O'Neil, Bill Doyle, Glenn Sponholtz.



I. H. S. A. Trophy won by Wildcats by taking first place in the Regional Tournament held at Aurora.



A tip-off to a good season.



We got within three points of upsetting Glenbard in the Sectional.

The victorious We-Go Wildcats thrilled all West Chicago this season with a record of 17 wins and 9 losses. They took fourth in the conference with an 8 and 6 record but all but one of their losses were by close scores. We-Go went into the Regionals as the underdogs to St. Charles and West Aurora. After upsetting West Aurora, the 'Cats beat the St. Charles' Saints 50 to 40 to capture the Regional trophy and gain a sectional berth. It was the first post-season trophy for West Chicago since the 'Cats of 1932 captured the District Championship. In the sectional We-Go was matched against Glenbard West, which boasts an enrollment of over three times ours. Glenbard barely won it, just squeaking by our boys 57 to 54.

During the whole season Glenn Sponholtz broke the one game record of most points scored with 37. He also broke the total points record of 437 of an individual for one year by scoring 534. Glenn also was chosen by the Little Seven Sports writers to be on the Little Seven First Team. Gerry Timm was on the Second Team, and Bill Doyle was given an honorable mention. Timm and Sponholtz also got honorable mentions and special mentions by various Chicago papers. All in all, Coach O'Neil and the Wildcats certainly have given West Chicago something to remember.



The great brother combination of Glenn and Keith Sponholtz gave height to our club.



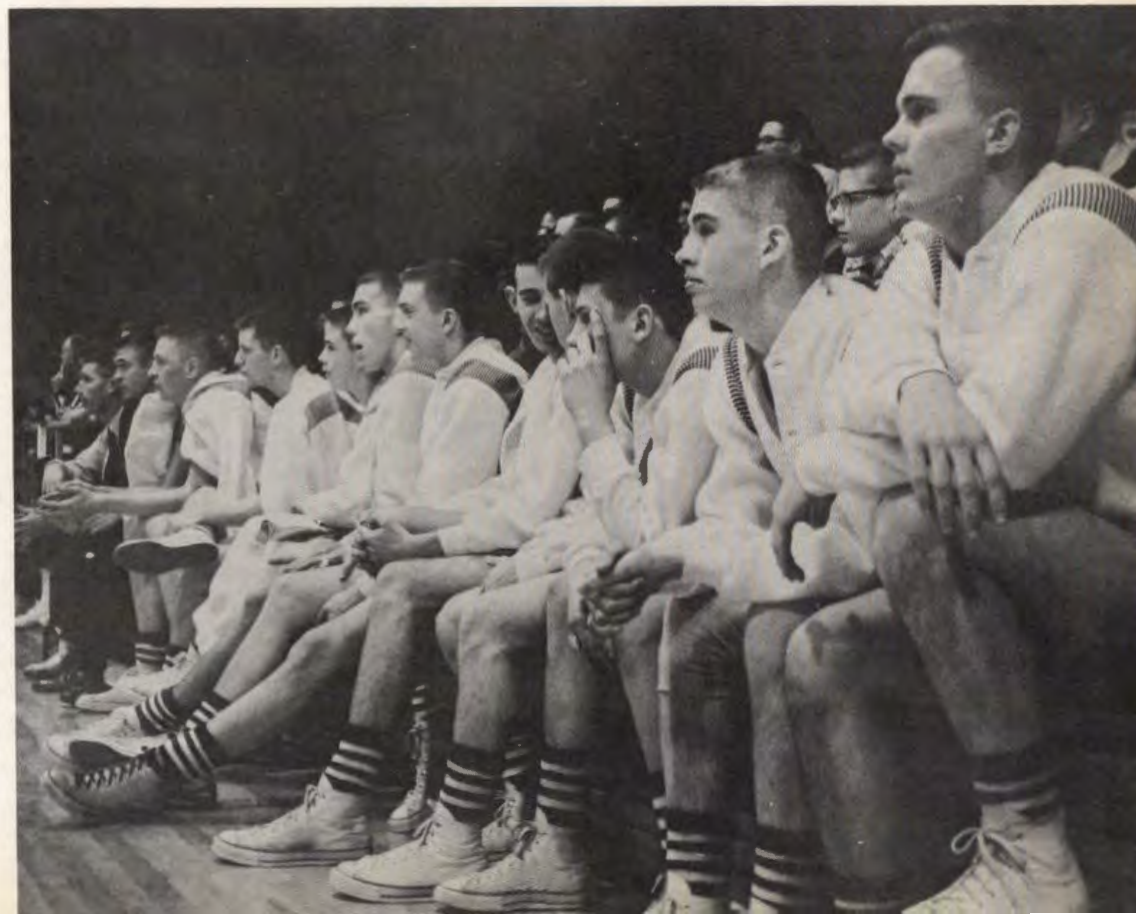
High-scoring forward Gerry Timm and the two high pressure guards Andy Garbacz and Bill Doyle completed the starting five.

A strong bench permitted occasional substitutions.

VARSITY RECORD

WE-GO 49	Central	43
WE-GO 82	St. Edwards	77
WE-GO 79	Belvidere	43
WE-GO 68	West Proviso	48
WE-GO 61	Batavia	60
WE-GO 68	Sycamore	74
WE-GO 46	Geneva	68
WE-GO 87	Kaneland	78
WE-GO 52	Geneva	65
WE-GO 39	Naperville	40
WE-GO 86	Fenton	39
WE-GO 66	Mooseheart	33
WE-GO 42	St. Charles	39
WE-GO 51	Belvidere	41
WE-GO 56	Batavia	43
WE-GO 66	Wheaton	69
WE-GO 69	Sycamore	72
WE-GO 64	Geneva	65
WE-GO 81	Naperville	36
WE-GO 68	Mooseheart	46
WE-GO 93	Lake Park	62
WE-GO 51	St. Charles	71
WE-GO 78	Naperville	67
WE-GO 69	West Aurora	54
WE-GO 50	St. Charles	40
WE-GO 54	Glenbard	57

Won 17 Lost 9





First Row: Dick Jahns, Harold Giese, Jim Hammond, Bod Radunzel, Tom Weigend. Second Row: John MacKenzie—manager, Renny Hughes, Tim Seeley, Bob Weaver, Leroy Johnson. Third Row: Coach Kyger, Pat Alden, Steve Nail, Bob Price, Bob Owens, Larry Moravec.

FROSH-SOPH RECORD

WE-GO 37	Central	28
WE-GO 28	St. Edwards	24
WE-GO 20	Belvidere	35
WE-GO 32	West Proviso	26
WE-GO 42	Batavia	53
WE-GO 35	Sycamore	46
WE-GO 52	Kaneland	39
WE-GO 55	Batavia	57
WE-GO 52	Mooseheart	41
WE-GO 52	Uaperville	44
WE-GO 51	Fenton	31
WE-GO 42	Mooseheart	24
WE-GO 37	St. Charles	43
WE-GO 38	Belvidere	42
WE-GO 42	Batavia	55
WE-GO 43	Wheaton	48
WE-GO 31	Sycamore	51
WE-GO 40	Geneva	57
WE-GO 52	Naperville	62
WE-GO 39	Mooseheart	41
WE-GO 41	Lake Park	49
WE-GO 49	St. Charles	43
WE-GO 34	York	44

9 Wins 14 Losses

The Fresh-Soph team, prone to injuries, suffered after mid-season. They had eight wins and four losses at the halfway point, then injuries occurred. The biggest accomplishment of the Kits all season was to bring a third place back to We-Go from their Holiday Tournament.

This team also produced a good record of 11 wins and 10 losses. This team shows very good potential and promise.

Freshman Basketball Record:

WE-GO 34	Batavia	30
WE-GO 33	Marmion	50
WE-GO 45	Mooseheart	33
WE-GO 41	Geneva	58
WE-GO 24	Glenbard	53
WE-GO 45	Naperville	41
WE-GO 37	Mooseheart	33
WE-GO 50	Kaneland	27
WE-GO 34	Geneva	63
WE-GO 37	Batavia	36
WE-GO 49	Marmion	43
WE-GO 28	Naperville	46
WE-GO 27	Batavia	39
WE-GO 33	Batavia	28
WE-GO 53	Wheaton	51
WE-GO 20	Wheaton	46
WE-GO 37	St. Francis	41
WE-GO 24	St. Francis	18
WE-GO 45	Geneva	54

Won 11 Lost 10

First Row: Rich Nagel, Don Christner, Ralph Nagel, Don Sprague, Fred Kammes. Second Row: Ed Wold — manager, Jerry Giese, Larry Nelson, Don Fotre, Larry Bruscher, Reed Simmons. Third Row: Don Howieson, Coach Demay, Bill Szorc, Steve Nail, Ken Schlueter, Jim Thompson, Joe Jedlovec.





First Row: Martin Beltowski, Chuck Hindes, Bill Mertes, Jim Newman, Duncan McLeod. Second Row: Coach Dean, Denny Wolfe, Dick Vedder, Don Hopkins, Ed Thielen, Dick Bell. Third Row: Jim Hagen, Chuck Warning, Tom Thielen, Alan Aimone, Lanny Hittman, Bill Thielen, Fred Fahlsing.

Varsity Wrestling Record:

WE-GO 15	Glenbard	27
WE-GO 40	Mooseheart	10
WE-GO 19	Barrington	27
WE-GO 27	Lake Park	19
WE-GO 34	Batavia	18
WE-GO 15	Naperville	33
WE-GO 40	St. Charles	6
WE-GO 15	Oswego	33
WE-GO 35	Sycamore	11
WE-GO 29	West Aurora	19
WE-GO 28	Dundee	11
WE-GO 33	East Aurora	8
WE-GO 25	Mooseheart	14
WE-GO 16	Elmwood Park	32
WE-GO 27	Batavia	12
Won 10		Lost 5

This year's squad was the best team in We-Go's four year history of wrestling. The matmen won 10 and lost 5, along with taking a first in the Elmwood Park tournament and taking a second in the Conference Meet finishing just behind Naperville. After the district meet five boys qualified for the sectional meet against the powerful Palatine district. Unfortunately, all our qualifying boys were eliminated in the first round. Next year may be a different story.

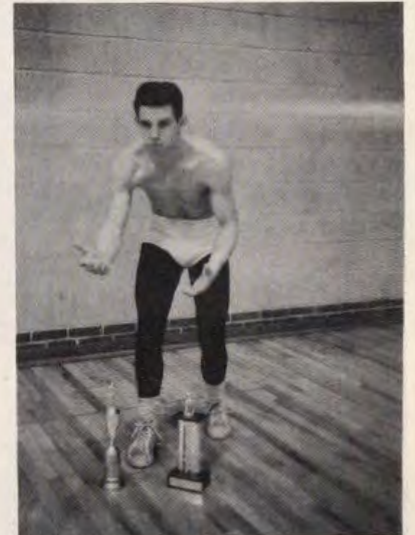
Bell, West Chicago, reverses on Washington, East Aurora. (180 lbs.).



Hopkins breaks down opponent. (154 lbs.).



Bill Mertes, Captain—'60-'61, Conference Champ (133 lbs.).



Bob Fowler, Wrestler of the Year, Elmwood Park Tournament Champ, Conference Champ. (138 lbs.).



First Row: Wayne Hammer, Paul Mosier, Antonio Ponzio, Bob Wipert, Rick Petrzilka. Second Row: Paul Moore, Jerry Hendrickson, Tom Miller, Bert Howieson, Rog Hammer, Bob Burgess. Third Row: Fred Johnson, Kenny Beeman, Eddie Alderton, Judd Timm, Harry Moravec, George Watanabe, Coach Cowden.

Fresh-Soph Wrestling

WE-GO	3	Glenbard	51
WE-GO	16	Barrington	40
WE-GO	21	Lake Park	31
WE-GO	45	Batavia	13
WE-GO	8	Naperville	46
WE-GO	28	St. Charles	18
WE-GO	18	Oswego	32
WE-GO	27	Dundee	23
WE-GO	26	East Aurora	26
WE-GO	23	Elmwood Park	21
WE-GO	40	Batavia	17
WE-GO	7	Glenbard East	38

Won 5 Lost 6 Tied 1



Johnson attempts to pin opponent.

R. Hammer turns over opponent.





First Row: Gordon Vedder, manager, Steve Bayer, Howie Novell, Clayton Nelson, Bob Fowler. Second Row: Tim Root, Bill Alexander, Bill Doyle, Glenn Sponholtz, Shane Conway. Third Row: Coach Francis, Malcolm McGawn, Thom Wehman, Dick Bell, Dick Kloubec, Steve Willeumier, Dan Holt, Coach O'Neil.

VARSITY TRACK

WE-GO	69	Geneva	49
WE-GO	54	Wheaton	64
WE-GO	38 2/3	Mooseheart	79 2/3
WE-GO	33 1/2	Naperville	84 1/2
WE-GO	25 9/10	Naperville	83 9/10
		Morris	36 1/5
WE-GO	64 1/2	Batavia	53 1/2
WE-GO	57 2/5	Kaneland	60 3/5
WE-GO	55 1/2	Elmwood Park	62 1/2
WE-GO	43 1/2	St. Charles	63
		Sycamore	51 1/2

Won 2 Lost 6*

*Placed 2nd at St. Charles Tri Meet

Placed 5th in the Little Seven Conference Meet



Front: Thom Wheman, Bill Doyle.

The 1959 track season was poor as far as the score goes. But looking forward to the returning letterman, Bayer, Bell, Doyle, Fowler, and Sponholtz plus some Sophomore help, the 1960 track season should prove to be one which will receive great notice. Then only varsity record breaker was Bob Fowler in the pole-vault with a leap of 11'4" in the district track meet. At the Elmwood Park Relay, We-Go's three-man pole-vault team set a new mark of 30'3", lead by Fowler at 11'3" along with Doyle at 10', and Radnuzel at 9'. Varsity sprint medley time of 1:45 by Wehman, Doyle, Willeumier, and Bayer set a new record.



First Row: Barry Smith, Chuck Hinds, Mike Smallman, Dan Messer, Mike Wehman, Chuck Wilde, Dick Jahns, Bob Radnuzel, Gordon Vedder, manager. Second Row: Chuck Works, Fred Para, Denny Wolfe, Jim Mad-

den, Connie Chmielewski, Paul Moore, Renny Hughes, Dan Madison. Third Row: Jim Rakow, Mike Gilszmer, Ed Holt, Larry Sauer, Keith Sponholtz, Al Gorick, Bob Price, Dick Vedder, Dave Sauer, Coach O'Neil.

FROSH-SOPH TRACK

WE-GO 45	Geneva	73
WE-GO 65	Wheaton	53
WE-GO 51	Mooseheart	67
WE-GO 59	Naperville	59
WE-GO 65 1/2	Naperville	75 1/2
	Morris	7
WE-GO 88	Batavia	30
WE-GO 70	Kaneland	50

1959 Fresh-Soph
Track Records

WE-GO 88 1/3	Elmwood Park	29 2/3
WE-GO 58	St. Charles	60
	Sycamore	32

Won 4 Lost 4* Tie 1

*Took 2nd in both Tri Meets
Fresh-Soph won the Little Seven Conference Meet by 1 point.

The Fresh-Soph came through with a surprising first place in the Little Seven Conference Track Meet. The 1959 Fresh-Soph track team had a relatively good season. The record breakers were Jim Madden, who broke the school high jump record with a jump of 5'8". Madden also broke the broad jump record with a leap of 20'3". Dave Sauer broke the fresh-soph shot put record with a heave of 40'3". Bob Redunzel went 10 feet to tie the pole vault record. The relay team of Madden, Price, Wilde and Bayer set two marks: in the 880 yard relay at 1:40.2, and the mile relay with a time of 3:53.



88

Jim Madden



Bob Price, Steve Bayer



Standing, Right: Coach Price, Lonnie Hunt. First Row: Ronnie Klingberg, Earl Harker, John Hindes, Tom Doggett, Ray Snyder, Larry Stevenson. Second Row: Fred Reuer, Loren Ronshiemer, Andy Garbacz,

Jerry Kerner, Larry Belchner, Don Baumgartner, Larry Johnson. Third Row: Herb Buhr, Dick Lenertz, Gerry Timm, Dan Sharp, Ron Schlueter, Ed Thielen, Jack Krueger.

VARSITY BASEBALL

1959 Varsity Baseball Record

WE-GO 4	Wheaton	0	WE-GO 7	St. Charles	2
WE-GO 8	St. Charles	0	WE-GO 4	Elgin	8
WE-GO 12	Wheaton Acad.	3	WE-GO 16	Geneva	0
WE-GO 3	Batavia	0	WE-GO 5	Batavia	0
WE-GO 3	Lake Park	3	WE-GO 8	St. Charles	12
WE-GO 3	Elgin	0	WE-GO 3	Wheaton	0
WE-GO 3	Naperville	1	WE-GO 4	Naperville	1
WE-GO 18	Geneva	2	WE-GO 0	Sycamore	2

Won 12 Lost 3 Tie 1
 Little Seven Won 5 Lost 1
 (Conference Co-Champs)



Don Baumgartner



Fred Reuer



First Row: George Kveck, Sonny Macaluso, Chuck Warning, Tom Hodson, Bill Mertes, Jim Hagen, Dave Buckner. Second Row: Jim Hammond, Jim Weigend, Fred Fahlsing, Bob Weaver, Ed Sala Denny Day. Third Row: Chris Christenson, Duncan McLeod, Rex VanWinkle, Pat Alden, Cliff Johnson, John Azer, John MacKenzie, Don Duszynski, Vince Mann, Coach DeMay.

FROSH-SOPH BASEBALL

1959 Fresh-Soph Baseball Record

WE-GO	4	Wheaton	3	WE-GO	7	St. Charles	3
WE-GO	3	St. Charles	2	WE-GO	6	Elgin	3
WE-GO	6	Glenbard	3	WE-GO	9	Geneva	6
WE-GO	0	Wheaton	12	WE-GO	14	Lake Park	15
WE-GO	9	Elgin	8	WE-GO	7	Wheaton	8
WE-GO	1	Naperville	5	WE-GO	15	Batavia	7

Won 8 Lost 4

Andy Garbacz



The 1959 Wildkits were unsung heroes. Although they received little publicity they turned up an overall season record of 8 and 4. In 1960 it is hoped that the freshman class will contribute some outstanding players and the Kits will equal and better their 1959 record.

This has undoubtedly been the best season a West Chicago baseball team has experienced. The 1959 Wildcats finished in a two-way tie for first place in the Little Seven Conference with Sycamore. The Cats had one of the most powerful teams in the area. Returning regulars for the 1960 team are Don Baumgartner, Andy Garbacz and Fred Reuer, seniors, and Gerry Timm, a junior. With the entrance of Belvidere in the conference the Cats should have a very profitable 1960 season, even though their pitching staff is rather vacant.



CLASS



Judith Adamson



Alan Aimone



Elizabeth Arens



John Azer



Michael Ball



Joseph Genovesi



Carol Gilmore



Donald Bartlett



Diane Bauer



Steve Bayer



Roger Bentley



Elena Berkley



Alan Gorick



Terry Berthold



Jane Booth



Kay Brown



Beverly Brozauskis



Barbara Bruce



Richard Bruce



Richard Brucher



Dawn Buckner



Jane Cadle



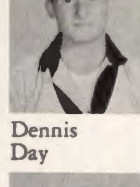
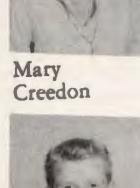
Judith Clark



George Collins



Fred DeTray



Ralph Deming



Fred Fahlsing



Frank DiNicolò



Donald Duszynski



Diane Enders



Bruce Englesman



Evelyn Fairbanks



Katherine Falbo



James Feltes



Pat Gast



Junior girls make the "Harvest Moon" mural.



Class Officers
 Dick Mayer, president
 Mr. Kiiskila, advisor
 Gerry Timm, vice-president
 Nancy Neilsen, treasurer
 David Sauer, secretary



Susanna Grubbs



Phyllis Hadfield



James Hagen



Robert Hann



Lila Hanke



William Haverly



Leonard Heinberg



Charles Hindes



Thomas Hodson



Elizabeth Holman



Ernest Holt



Kathleen Hoskinson



Lorra Hutson



Diane Ivarson



Sandra Jedlovec



Cathleen Johnson



Clifford Johnson



Karen Kammes



Kathleen Kelley



Janet Kleinwachter



Sally Kline



James Klock



David Knapp



Jane Knifong



Jeffrey Knight



Mary Korona



LeRoy Kostner



Diane Kruse



Robert Kubian



George Kveck



Jo Allene Landorf



Robert Langtry



Michael Lawrence



Janet Levey



Sandra Loose



Lawrence Macaluso



Ronald Mackert



Leeina Lovellette



Finished product!



James Madden



Karen Madsen



Vincent Mann



Leanne Mantz



Joan Marotzke



David Sauer



Barbara Scharf



Janice Marshall



Darlene Martin



Steven Marz



Richard Mayer



Thomas McDonald



Sharon McFarland



Duncan McLeod



William Mertes



Dennis Michael



Judith Mileski



Paul Moore



Barbara Murphey



John Neumeister



James Newman



Nancy Nielsen



LaMoyne Nielsen



Howard Olsen



Sue Owen



Fred Para



Fred Patch



Don Paulson



Barbara Piper



James Rakow



Diane Rasmussen



Roberta Roloff



CLASS



Ronald Rotramel



Kathryn Rupp



Karen Rupp



Catherine Sachse



Edward Sala



BOARD



Esther Schingoethe



Rose Schlick



Kathy Schmidt



James Schnaitman



Jayne Schommer



Mary Schommer



Karen Schoppe



Mary Schramer



Mary Sheahan



Lynne Slorahn



Rose Smith



Donna Smykal



Nancy Speers



John Spurgin



William Stewart



Renee Stirber



Grace Suppes



James Tanzilli



Margaret Taylor



Jeffrey Thalman



Thomas Thielen



William Thielen



Gerald Timm



Sharon Tinnes



Richard Vedder



Lois Warkentin



Charles Warning



Joseph Watanabe



Katharine Weimer



Charles Wilde



Henriette Willeumier



Bruce Williams



Sandra Wind



Dennis Wolfe



Wayne Woodward



John Wyatt



Charlene Yagel



CLASS

Bobbie Kay Robinson says, "Happy Birthday."



Burton Adam



Patrick Alden



Edwin Alderton



Marcia Alm



Estelle Ast



Betty Ballard



Edward Bartha



Frank Baum



Kenneth Beeman



Judith Bergstrom



Bruce Berkes



Barry Blanchard



Shirley Blum



Edward Brown



Peggy Bryson



David Buckner



Kathleen Carey



Patricia Carey



Joan Carr



Conrad Chmielewski



Chris Christensen



Jennifer Coates



Jamie Colford



Sharon Conley



Gregory Daleiden



Linda Dall



Roger Day



Vicki Dierking



Diana Dierschow



Cecelia Doyle



Kathleen Doyle



Katherine Dulson



William Fessler



Janet Fitzsimmons



Burton Fletcher



Lawrence Flurry



Carol Forkin



William Fowler



Lawrence Franklin



Mary Frey



Leonard Gangestad



Diane Gast



James Gatewood



Ellis Geer



Carol Gent



Bonnie Gibson

OF 1962

Kay Stroker, "Green Mist's" Mistress of Ceremonies



David Giese



Harold Giese



Michael Gilszmer



Diane Gladding



Tom Glosenger



Beth Goodwin



Richard Gould



Mary Alice Grubner



Bonnie Hames



Wayne Hammer



James Hammond



Bette Hansen



David Hasenheyer



Don Hattendorf



Jerry Hendrickson



Carol Herman



Emily Hill



Marcia Hindes



Calmae Hinz



Rae Ann Hitzemann



John Howieson



Dianne Hubbard



Clarence Hughes



Richard Jahns



Susan Jellison



Robert Johanson



Frederick Johnson



Leroy Johnson



Ronald King



Patrick Kirby



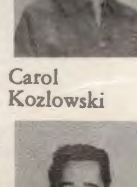
Sharon Kirk



Leona Kowalski



Carol Kozlowski



David Kucinski



Karen Kusma



Marcia Lamczyk



James Lewis



Diane Lyman



John MacKenzie



Daniel Madison



Bethel McClung



Ann McGraham



Rosemary McKenney



Avice Mendriski

Class Officers

Chris Christenson, president
 John MacKenzie, vice-president
 Kathy Dulson, secretary
 Estelle Ast, treasurer



Joy Meriam



Thomas Meyen



Mary Margaret Miller



Paul Miller



Thomas Miller



Bernard Modaff



Lawrence Moravec



Patricia Morrison



Paul Mosier



Mary Natche



Linda Nelson



Frederick Neslund



George Nichols



Ellyn Nielsen



Elicen Nolan



Janet Norcutt



Reva Norwood



Barbara OptHolt



Robert Owens



JoAnn Perez



Javier Perez



Patricia Peterson



Anthony Ponzo



Robert Price



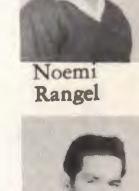
Pennie Punter



Robert Radunzel



Noemi Rangel



Serapio Rangel



James Rasmussen



Bonnie Roberts



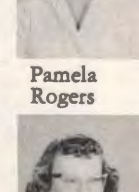
Roberta Robinson



Edwin Roedell



Pamela Rogers



Nancy Rohr



Judith Ruch



Cheryl Rupp



Mary Lynne Rupp



Chris Sobathne



Barbara Sagerhorn



David Sandhop



Marsha Sauber



Larry Sauer



Eugene Schlick



Richard Schmidt



Biology Class



Robert Schneider



Madelyn Schommer



Virginia Schramer



Lynne Schramer



Patricia Schramer



Arthur Schroder



Gerald Seaborn



Marcia Shafer



Patricia Sharp



Darby Shaw



Susan Siekmann



Valentine Simon



Michael Smallman



George Smith



James Snyder



Carol Spahn



William Spencer



Keith Sponholtz



Sharon Stephan



William Stillwell



Kay Stroker



Robert Suppes



Wayne TerBush



Berenice Thomas



Rita Thompson



Judd Timm



Andrea Tinnes



Peter Torrol



Rex Van Winkle



Gordon Vedder



Vincent Vidlak



George Vincent



Andrew Vrchota



Robert Weaver



Richard Weckel



Michael Wehman



Tom Weigand



Nancy Weltman



Gordon Wilson



Charles Works



Gloria Zissler



Daniel Messer



Valerie Pinkert



Thomas Aitken



Karen Allen



Barbara Alm



Ronald Anderson



Patricia Atkinson



Jacqueline Atwell



William Baxter



Rodney Beck



Martin Beltowski



Richard Born



John Brader



David Bruce



Lawrence Brucher



Robert Burgess



Gloria Campos



Kenneth Carlyon



Irma Castillo



Diana Cawthorne



Jacqueline Chada



James Christner



David Clark



Darrell Colford



Wallace Collins



Robert Compton



Michael Coyne



Randall Cue



Phyllis Dieter



Terry Duber



Gordon Dunnett



Jeanine Dusek



Jeannine Ermisch



Robert Estrada



Donald Evans



Donn Fairbank



Angelo Falbo



Thomas Fessler



David Folino



Don Fotre



Georgia Free



Elliot Gage



Freshmen watch upperclassmen

CLASS OF 1963

Upperclassmen watch Freshmen at
"G.A.A. Play Night."



Arlene Gatewood



Diane Gibson



Gerald Giese



Robert Gould



Reginald Haag



Patricia Haase



George Hacker



Kenneth Hahn



Edward Hall



Roger Hammer



Mark Hawkins



Marjorie Herman



Roberta Hess



Rose Hill



John Hillwick



William Hossman



Elizabeth Howieson



Daniel Howieson



Kathie Jahns



Geraldine Johnson



Joseph Jedlovic



Fran Kammes



Joan Keck



Robert King



Kathryn Klein



Mary Kleinwachter



Andrea Kline



Keith Knapp



Leslie Knight



Jay Kreamer



Rita Krosel



Barney Kucinski



Walfred Kusma



Dennis Lahman



George Lamczyk



John Lee



Valerie Leslie



William Lillie



Ginger Lucht



Judith Lutrell





Robert McCoy



Carolyn McGawn



George McGrath



Jerry McVicar



David Maas



James MacDonald



Richard Mann



Richard Mastaler



Farrady Melin



David Mendriski



Diane Miller



Peter Moore



Harry Moravec



William Mueller



Patricia Murphy



Ralph Nagel



Richard Nagel



Steve Neill



Larry Nelson



David Nicoloff



Thomas Overton



Leon Partee



Rick Petrzilka



Ilona Pinzke



Margaret Rainone



Artemio Rangel



Wayne Rasmussen



Sue Reinink



William Robatzek



Henry Roedell



Neal Ronzheimer



Jerry Ross



Sharon Rothstein



William Sabathne



David Schacht



Kenneth Schlueter



Frederich Schnitker



Richard Schramm



Timothy Seeley



Richard Sharp



Class Officers
Jacquie Chada, secretary
Barb Alm, president



Reid
Simmons



Patsy
Simpson



April
Smith



Richard
Smith



Sharon
Spillman



Don
Sprague



Kathleen
Sproat



Lawrence
Stark



James
Steel



Douglas
Steffen



James
Steven



Candice
Stults



William
Szorc



William
Thime



James
Thompson



Michael
Thompson



Beverly
Timm



Judy
Turner



George
Watanabe



Carol
Wells



Jerry
Westrom



Jean
Williams



Wayne
Wind



DeLoma
Winkler



William
Wipert



Edwin
Wold



Francis
Wood



Marlo
Woolcott



Mary
VanNess



Christine
Vantresse



Judith
Vantresse



Jean
Verhines



Joanne
Verselder



James
Vidlak



Anita
Zarate

Bill Szorc, vice-president
Miss Stahl, advisor
Margie Herman, treasurer

Autographs

SENIOR CLASS WILL

To the school we leave

Our deep impression — those deep ones we scratched
in the desks in our four years.

To the faculty we leave

The underclassmen who will undoubtedly give you ample
reason to look forward to your retirement.

To the custodians we leave

The ashes from our gym suits for use on the sidewalks
next winter.

To the juniors we leave

Our troubles — finding, applying to, taking tests for,
sending money to, and usually being rejected by the
college of our choice.

Mr. Murphy the ONE TRUE GENIUS, who just might prove
Einstein wrong if he could figure out what he is
trying to prove!

Mr. Severe, who will indubitably ameliorate your lexicon.

Mr. Smith and his constant flow of subtle humor — so
subtle that it takes a while to sink in.

The HIGH glory of being a senior; High — because you
will be situated up in the balcony (you could never
be as high as we were).

To the underclassmen we leave

Our lockers — of course, you'll have to clean them out!

The IBM clocks — those "rugged" individualists that
never even conform with one another.

Our places in the lunch line — now you've got a fighting
chance.

SENIOR

CUTEST COUPLE



A. Garbacz

C. Fairbank

MOST INTELLIGENT



J. Groustra



B. Smith

MOST LIKELY TO SUCCEED



R. Bell



C. Bancroft

MOST ATHLETIC



B. Fowler



K. Thompson

FRIENDLIEST



S. Conway



M. Hawkins

BEST DANCERS



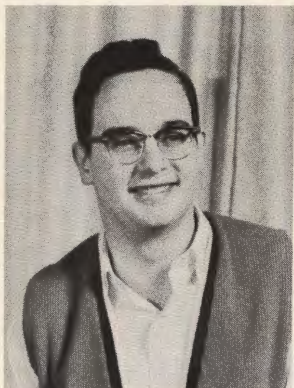
D. Baumgartner



B. Kimmel

SUPERLATIVES

MOST EFFICIENT

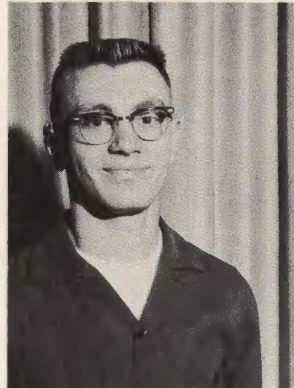


J. Thompson



J. Aitken

MOST MUSICAL



J. Walker



M. Farley

DREAMIEST



D. Sharp



B. Frieck

BEST DRESSED



L. Hittman



S. Karwoski

FUNNIEST



B. Alexander



L. Seeley

MOST TALKATIVE



W. Bergstrom



B. Rateik



